

THANK YOU

The Clumber Players would like to acknowledge the help of the following:

The Wardens and staff of Clumber Park.

Ron Thomas.

Julie Wakefield and the staff of Worksop Public Library.

All who distributed and displayed Posters, Car Stickers.

Jonathan Paulger.

Adrian Chesters.

The Carlton Tavern for the bar.

South Anston Fire Extinguishers. Tel: 01909 562040
Sale & Service of all types of fire extinguishers to B.S.

St. John's Ambulance Brigade.

A-Z Tech Security.

HONORARY PATRONS

Mr. P. D. Burton Mr. D. Emmerson Mrs. A. Barsley Mr. & Mrs. I. Pawson



CLUMBER PLAYERS
Open Air Classical Theatre



NATIONAL TRUST
(Clumber Park)



CLUMBER PLAYERS
Open Air Classical Theatre

THE CLUMBER PLAYERS

PROUDLY PRESENT

A Man For All Seasons

by ROBERT BOLT



Wednesday July 4th ~ Saturday July 7th 2001

In the Old Turning Yard, Clumber Park, Worksop, Notts at 7.30 pm

The Clumber Players are a Registered Charity

Clumber Players Past Productions

1980 : Twelfth Night
1982 : A Midsummer Night's Dream
1982 : Il Fornicazione (Clumber Park Spectacular)
1983 : Much Ado About Nothing
1984 : The School For Scandal
1985 : The Taming Of The Shrew
1986 : Canterbury Tales
1987 : A Winter's Tale
1988 : Romeo And Juliet
1989 : The Merchant Of Venice
1990 : As You Like It
1991 : The Recruiting Officer
1992 : The Merry Wives Of Windsor
1992 : The King's Entertainment at Welbeck (Masque)
1993 : Macbeth
1994 : The Rivals
1995 : The Comedy Of Errors
1996 : She Stoops to Conquer
1997 : Measure for Measure
1998 : King Lear
1999 : A Midsummer Night's Dream
2000 : Twelfth Night
2001 :

Future Productions

2002 : Much Ado About Nothing
by William Shakespeare

Wed 3rd July - Sat 6th July 2002

OLD TURNING YARD, CLUMBER PARK, WORKSOP

For more details please phone:
Mrs Pat Thomas 01909 731778

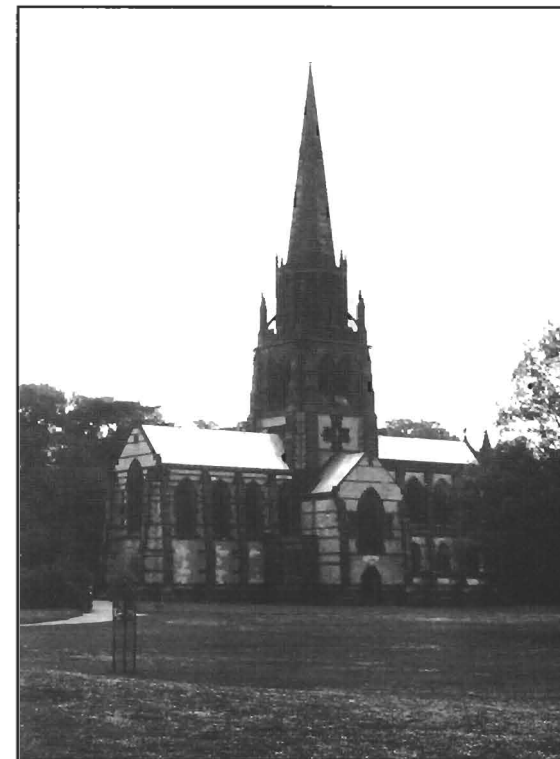


CLUMBER PLAYERS
Open Air Classical Theatre

'A MAN FOR ALL SEASONS' by ROBERT BOLT

OPEN AIR THEATRE, CLUMBER PARK, WORKSOP

Performed in conjunction with the National Trust, Clumber Park.



WHO ARE THE CLUMBER PLAYERS? What are They?

Many moons ago, back in the spring of 1979 to be precise, a couple of local thespians, members of different groups, could be heard idly speculating on the chances of being involved in a Shakespearean production. They came to the conclusion that, although potentially the requisite number of actors could be found if various groups joined forces, there was no suitable venue available.

In the summer of the same year, two members of the then Worksop Dramatic Society were talking with officials of the National Trust in Clumber Park in connection with a different project. The subject of the walled garden was raised and, though it was not suitable for the event under discussion, it suggested other possibilities - a Shakespearean production.

Members of three local groups came together for a meeting to discuss the matter, Lindrick players, Portland Players and Worksop Dramatic Society (now Dukeries Theatre Group). The upshot of these discussions was the decision to stage the joint production of a Shakespeare play in the walled gardens, - the play selected? Twelfth Night.

A temporary stage was erected on pallets and the performances were received with enthusiasm. That should have been it, but the Players, always gluttons for punishment, decided that they wished to repeat the exercise, however they were not such gluttons for punishment that they wished to lug pallets around again.

The die was cast. The Players would, if they were permitted so to do, build a permanent stage and present productions annually. Lengthy discussions with Clumber Park ensued, with permission given and stipulations as to the materials to be used.

Throughout 1981 and 1982 the players laboured to raise money, dig footings, mix cement and to build the stage you see before you. In June 1982, exactly 1 week before the inaugural production upon it, the stage was completed. It was with considerable pride that the Players gave it into ownership of the National Trust.

That first production on the new stage was 'A Midsummer Nights Dream'. With a different group of individuals it might well have turned into a 'Midsummer Nightmare'- it rained - and rained and rained! However, the weather did not succeed in damping the enthusiasm of the Clumber Players or the audiences and early on in their existence the Players set a tradition. If they have an audience, be it an audience of only one, they will play, regardless of the elements are doing.

From those early beginnings - a one off production - the scope and reputation of the Clumber Players has grown. They are very aware of and humbled by, the loyalty of the audiences, many of whom travel considerable distances to share with them year after year. Without you, the audience, the Players' work would be futile and in the words of Feste in Twelfth Night, they will:-

"Strive to please you everyday"

A Man For All Seasons

Sir Thomas More, saint? - or just a stubborn fool?

Whatever ones opinion of the man, his place in history is established by his total inability to compromise his conscience regardless of the effects his actions might have on himself, his family and friends.

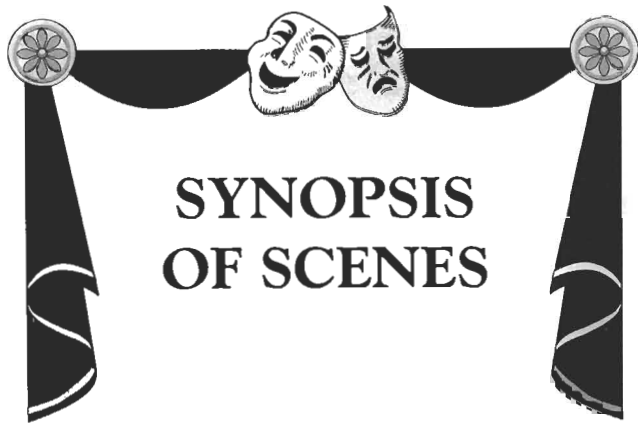
He was born in 1478, the son of a lawyer, coupled with his reputation for humour and wisdom, attracted the attention of the young King Henry VIII who made him a member of the Privy Council.

Henry enjoyed the company of the older man. He was accustomed to visiting More's house unannounced and would, on occasion "pick his brains". Ironically, one such instance was when writing a book in defence of the Sacraments of the Established Church.

Upon the death of Cardinal Wolsey in 1529 Henry created More Chancellor of the Duchy of Lancaster, one of the most important posts in the land. However, all was not well. Already Henry was becoming tired of his first wife, Catherine of Aragon, (his late brother's widow, who had required Papal Dispensation to marry) and wished to divorce her. Thomas More's conscience would not allow him to condone such a divorce and the conflict between the two was set in motion. It is the story of this conflict and the machinations of others with political ambitions that we set before you today.

Robert Bolt's powerful play works cleverly upon the interaction of the main protagonists of More's downfall. He uses the device of the Common Man to help mould the structure of the events:- the Common Man, the man in the Street, seeing the stirring events of state and marvelling at the antics of the great whilst struggling to survive himself.





SYNOPSIS OF SCENES

ACT I	Scene 1	More's House
	Scene 2	Hampton Court
	Scene 3	Thames Wharf
	Scene 4	More's House
	Scene 5	Hampton Court
	Scene 6	More's Garden
	Scene 7	Tavern

~ Interval 15 Minutes ~

Act II	Scene 1	More's House
	Scene 2	Court
	Scene 3	More's House
	Scene 4	Court
	Scene 5	Thames Wharf
	Scene 6	Prison
	Scene 7	Prison
	Scene 8	Courtroom
	Scene 9	Tyburn

CHARACTERS

The Common Man	Barry Nicholls
Thomas More	Mike Tomlinson
Richard rich	Neil Newell
The Duke of Norfolk	David Ward
Alice More	Gail Belshaw
Margaret More	Laura Hall
Cardinal Wolsey	Les Blackshaw
Thomas Cromwell	Ian Grant
Ambassador Chapuys	James Webb
Chapuys' Attendant	Greg Chesters
William Roper	Chris Hind
King Henry VIII	Steve Rowan
A Woman	Carole Tomlinson
Archbishop Cranmer	Jonathan Paulger
Boys	Philip Hall & Thomas Winsor
Members of the Crowd	Gilly Callaby, Angela Chesters, Pat Thomas



The Common Man - Barry Nicholls

This is Barry's second appearance for The Clumber Players, (his first was in a rather fetching blonde wig in last year's production!). When he is not lecturing, Barry enjoys running marathons and has previously competed in the London and New York Marathons. Among Barry's favourite plays are Sheridan's 'The Rivals' and Shakespeare's 'Hamlet'.

Thomas More - Mike Tomlinson

Mike's first appearance for The Clumber Players was in 1995. He enjoys the part of Thomas More because "he goes through the complete range of emotions". Mike also treads the boards for Retford Little Theatre, Retford Operatic Society, Dukeries Theatre Group, Stirling Drama Group and Blyth players, his favourites parts include Scrooge in 'A Christmas Carol', Bob in 'Pack of Lies' and Mr Hardcastle in 'She Stoops to Conquer'



Richard Rich -Neil Newell

Neil joined the Clumber Players as Sebastian in last year's production of Twelfth Night. His favourite part of this production is the scene where Rich is 'playing with fire'.

When he's not studying Performing Arts, Neil enjoys art, singing, and basketball.

The Duke of Norfolk - David Ward

A stalwart of both Dukeries Theatre Group and The Clumber Players, Dave's favourite plays include 'Shakers' and 'There goes The Bride' and his favourite parts are The Officer in 'The Comedy of Errors' and Bill in 'There Goes The Bride'. Dave's hobby is gardening, he say the theatricals takes up the rest of his time!



Alice More - Gail Belshaw

Describing herself as a highly qualified 'domestic engineer', Gail also enjoys gardening, swimming, walking and singing. A member of various groups including the Phoenix Theatre Co, Gringley 800 Players and also a Murder, Mystery Group, one of Gail's favourite parts is Elizabeth Proctor in 'The Crucible'.

Margaret More - Laura Hall

This is Laura's third appearance for the Clumber Players, her first was as one of the fairies in Midsummer Night's Dream, slightly different to the character of Margaret More who Laura says is pretty cool - just like herself! A very talented young lady, Laura enjoys playing the flute and has recently passed her grade V with distinction no less! Oh! And just between you and me, it's Laura's fifteenth birthday on Saturday.



Cardinal Wolsey - Les Blackshaw

A veteran of several Clumber productions, he says his favourite is 'The Merchant of Venice' in which he played Solario. Les is also a member of the Dukeries Theatre Group and when he's not rehearsing or working as a Resources & Information Officer, Les also enjoys photography, computers and walking, in fact he has recently completed a tour of the Scottish Isles.

Thomas Cromwell - Ian Grant

Ian certainly gets about a bit! Having joined the Dukeries Theatre Group in 1997 for their production of 'Two and Two Make Sex', Ian has also appeared in 'Living Together' and 'Sweet Revenge' to name but a few. He also had many successes in the Director's Chair including 'An Inspector Calls' and 'Lord Arthur Savile's Crimes. His roles for The Clumber Players include Duke Orsino in last year's production of 'Twelfth Night', Edgar in 'King Lear' and Claudio in 'Measure For Measure'.



Ambassador Chapuys - James Webb

A welcome return for James in his third appearance for the Clumber Players. James is also a member of The Dukeries Theatre Group and was seen earlier in the year bumbling around the Regal stage in the part of Tristram, the half-witted solicitor in DTG's production of 'Taking Steps'. A teacher by day, James lists some of his favorite plays as 'Measure For Measure', 'The Cherry Orchard' and 'Hedda Garbler'.

Chapuys' Attendant - Greg Chesters

This is also Greg's third appearance for the Clumber Players. Greg is an ardent Sheffield Wednesday supporter (much to the annoyance of a certain other member of the Players- Steve!), he also enjoys singing and playing the piano and trumpet. As well as having a talent for music and drama Greg also excels a being a pest! (says Mum).



William Roper - Chris Hind

Making his first appearance on the Clumber stage, Chris is also a member of Dinnington Operatics and could be seen very recently doing some rather nifty footwork as Slim in WLOS' production of 'Oklahoma'. Chris has a varied taste, enjoying West End musicals and work by DV8, The Trestle Theatre Co and Alan Ayckbourn plays, particularly 'Confusions'. Chris also enjoys Football, Golf, music and singing.



King Henry - Steve Rowan

Steve is also a member of Worksop Light Operatics Society and graced (!?) the stage in the part of Ike Skidmore in their recent production of 'Oklahoma'. A member of DTG, Steve played the part of the blustering builder, Bainbridge, in their spring production 'Taking Steps'. Steve also enjoys football and supports Sheffield United, but we don't hold that against him!

A Woman - Carole Tomlinson

A welcome return to the Clumber stage, Carole is a member of various theatre groups including DTG. Among her favourite roles are Lady Julia Merton in Lord Arthur Saviles Crime, Queen Evilina in Snow White and Mistress Overdone in Measure for Measure. Carole says she especially enjoyed these roles because they are pretty nasty characters!



Archbishop Cranmer - Jonathan Paulger

A Clumber production without Jonathan just wouldn't be the same; this is his eighteenth appearance for the Clumber Players. His favourite parts include Judge Scales in 'The Recruiting Officer' and the Man in The Moon in 'A Midsummer's Night Dream'. Jonathan also enjoys collecting memorabilia of our Royal Family.



The Boys - Philip Hall & Thomas Winsor

Please extend a very warm welcome to Philip and Thomas who are making their first appearances for the Clumber Players and they certainly seem to enjoy baiting the 'Common Man'! When they're not studying, both enjoy sports. Philip particularly enjoys fishing and softball, while Thomas enjoys rugby and cricket.

Step Back In Time

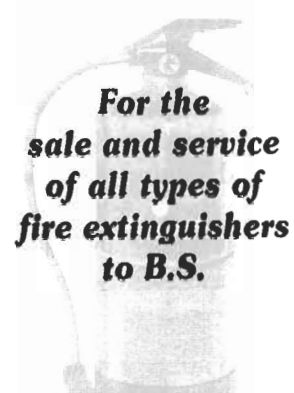
The Company
For
**ORIGINAL
COSTUME & PROPS**

**IMAGINATIVE
FANCY DRESS**

www.stepback-costumes.co.uk
Telephone 01777 870044



South Anston Fire Extinguishers



*For the
sale and service
of all types of
fire extinguishers
to B.S.*

Tel: 01909 562040



Powertune Ltd

Unit 9 Shireoaks Business Park
Shireoaks, Worksop

Tel/Fax: 01909 531588

*For all your vehicle
maintenance including
Air Conditioning*



Welbeck, Worksop

*Whether you are a professional
horticulturalist, a keen gardener in
your spare time, or a green-fingered
novice, we have everything
your garden requires.*

Tel: 01909 476506
Fax: 01909 482047
Email: info@dukeries.co.uk
Web Site: <http://www.dukeries.co.uk>

OPENING TIMES

March to October	November to February
Mon - Sat 9am - 6pm	Mon - Sat 9am - 5pm
Sunday 11am - 5pm	Sunday 11am - 5pm

Carlton Tavern



**Excellent Beer
Excellent Food
Excellent Hospitality**

Carlton Road, Worksop
Tel: 01909 473336

A NOTE FROM THE DIRECTOR

When the Clumber Players were conceived back in the last century, the idea was to be a group devoted to producing Classical works. Our first love is Shakespeare and you will see from the list of past productions that our main output is from the Bard. However, we feel the need for a change every now and then and there are many plays that can come under the heading of "Classic"

I have always loved Robert Bolt's "A Man For All Seasons" since the film way back in my student days and subsequently reading the stage play. Despite the fact that the play script as written suggests use of complicated lighting effects which we are unable to provide in the great outdoors, I have always felt this is not a hindrance to achieving the mood and feelings in the play. I have always been able to visualise it done effectively in our beautiful open-air surroundings and so offered it as this year's production.

I was very happy when I was given the go-ahead to attempt it and hope you will enjoy our efforts in staging it.

As usual what you see before you is the outcome of teamwork - the wonderful team that is the Clumber Players. My heartfelt thanks go to all have worked so hard to make this production possible.

Gill Wenger



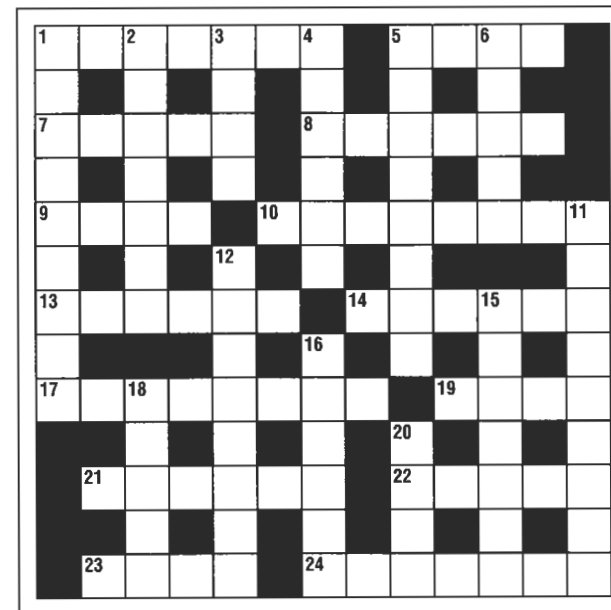
The Clumber Players are privileged to be associated with the National Trust in beautiful Clumber Park.

Clumber is just one of the superb properties preserved for the Nation by the National Trust.

You can help to maintain Britain's Treasure trove of history. Why not think of becoming a Trust member and helping to preserve our Heritage for future generations?

Details of Membership can be obtained from any National Trust property.

CROSSWORD



CLUES ACROSS

1. Eric ran me ragged in selection of Archbishop. (7)
5. These put the lid on us. (4)
7. Becomes tamer matriarch. (5)
8. Did Henry's affairs make him look red? (6)
9. Small boy returning to nothing will leave it out. (4)
10. Lord Protector? - No, a statesman in our story. (8)
13. Do them the wrong way in this system. (6)
14. Yells we hear before 'enry's big trouble. (6)
17. Prophet who sounds like a horse at the outset. (8)
19. He became his name in our story! (4)
21. When dowsing yeilds rewards. (6)
22. Will he catch Margaret? - Yes. (5)
23. Songster we hear wrote music. (4)
24. 18 down's wish for this led to the 14 across for 3 down. (7)

CLUES DOWN

1. Joe Bloggs? - For us anyway. (6, 3)
2. What tainted evidence embraced 3 down's sentence? (7)
3. What Oliver wanted displeased 18 down. (4)
4. Recompense for a muddled warder. (6)
5. Mud on the doormat! The stamp of authenticity. (8)
6. Within? - Not here! (5)
11. The short lose in a muddle what Richard III did. (4, 5)
12. The bitterness of a reversing bore. (8)
15. Pain? - Or comfort afoot. (7)
16. Successfully made sentence. (6)
18. Much married monarch. (5)
20. Second rate cleric in short, in short! (4)

For solution see page 15.

FOR THE PRODUCTION

Directed byGill Wenger
 Production ManagerJim Wilson
 Assisted byLes Blackshaw
 WardrobeBarbara Warsop
 Assisted byGilly Callaby, Iris Presswood, Mary Turner
 Poster designGill Wenger
 ProgrammeAngie Chesters
 Front of HouseIris Presswood, Pat & Ron Thomas, Angie Chesters
 Members of the Society.

MANY THANKS TO EVERYONE WHO HAS HELPED
 WITH THE PRODUCTION

FOR THE SOCIETY

ChairmanGill Wenger
 SecretaryGilly Callaby
 TreasurerIris Presswood
 Production ManagerJim Wilson
 Assisted byLes Blackshaw
 Ticket Liaison Officer.....Pat Thomas
 Publicity OfficerAngie Chesters
 WardrobeBarbara Warsop
 Safety Officer (Honorary)David Ward

Gill Wenger: Director

One of the founder members of the Clumber Players, Gill has been known to tread the boards for both the Players and Dukeries Theatre Group. Her successes as a director include 'Measure For Measure', 'As You Like It', 'Midsummer's Night Dream' and last year's production of 'Twelfth Night'. When she is not preparing lessons and marking homework, Gill can usually be found chasing her two rather mischievous kittens around the house or challenging the regulars of her local to a game of Tabula.



'IN REHEARSAL'



CROSSWORD SOLUTIONS
 Across: 1: CRANMER, 5: HATS, 7: MATER, 8: WOLSEY, 9: OMIT, 10: CROMWELL, 13: METHOD,
 14: CRISIS, 17: NEHEMIAH, 19: RICH, 21: ENDOWS, 22: ROPER, 23: BYRD, 24: DIVORCE.
 Down: 1: COMMON MAN, 2: ATTAINT, 3: MORE, 4: REWARD, 5: HALLMARK, 6: THERE,
 11: LOST HORSE, 12: WORMWOOD, 15: SLIPPER, 16: PASSED, 18: HENRY, 20: BREV.