

## THANK YOU

The Clumber Players would like to acknowledge the help of the following:

The Wardens and staff of Clumber Park

Ron Thomas

Julie Wakefield and the staff of Worksop Public Library

All who distributed and displayed Posters and Car Stickers

Jonathan Paulger

Clinton Timber Products Ltd Worksop

The Carlton Tavern for the bar

South Anston Fire Extinguishers

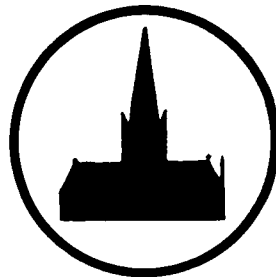
St John's Ambulance Brigade

A-Z Tech Security

Moody's Plc

### Honorary Patrons

Mr P D Burton Mr D Emmerson Mrs A Barsley Mr I Pawson



*Clumber Players proudly present*

# Hamlet

*by William Shakespeare*



Wednesday 30th June  
to Saturday 3rd July 2004

In the Old Turning Yard,  
Clumber Park, Worksop, Notts

at 7.30 pm

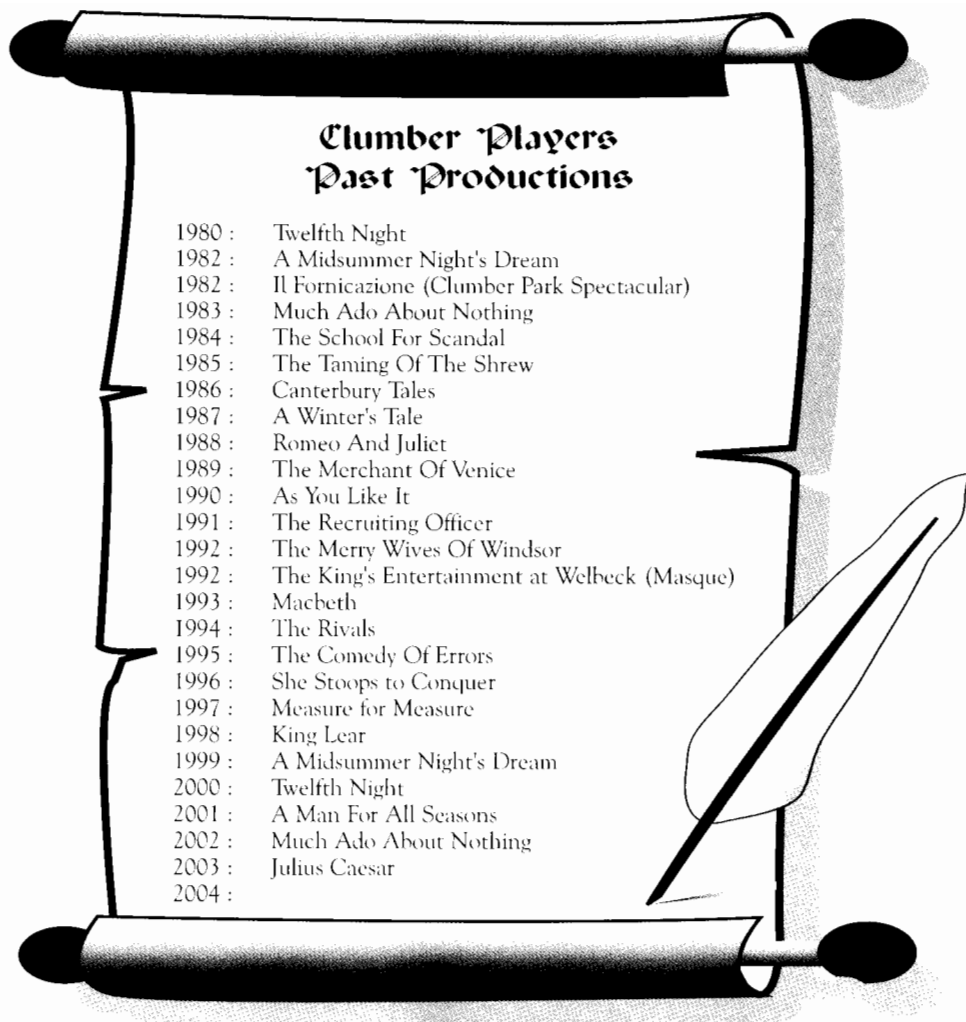


NATIONAL TRUST  
(Clumber Park)



CLUMBER PLAYERS  
Clumber Park, Worksop, Notts  
The Clumber Players are a Registered Charity  
Charity No. 1096519

SILVER XXXV JUBILEE



## Clumber Players Past Productions

- 1980 : Twelfth Night
- 1982 : A Midsummer Night's Dream
- 1982 : Il Fornicazione (Clumber Park Spectacular)
- 1983 : Much Ado About Nothing
- 1984 : The School For Scandal
- 1985 : The Taming Of The Shrew
- 1986 : Canterbury Tales
- 1987 : A Winter's Tale
- 1988 : Romeo And Juliet
- 1989 : The Merchant Of Venice
- 1990 : As You Like It
- 1991 : The Recruiting Officer
- 1992 : The Merry Wives Of Windsor
- 1992 : The King's Entertainment at Welbeck (Masque)
- 1993 : Macbeth
- 1994 : The Rivals
- 1995 : The Comedy Of Errors
- 1996 : She Stoops to Conquer
- 1997 : Measure for Measure
- 1998 : King Lear
- 1999 : A Midsummer Night's Dream
- 2000 : Twelfth Night
- 2001 : A Man For All Seasons
- 2002 : Much Ado About Nothing
- 2003 : Julius Caesar
- 2004 :

## Future Productions

2005 : As You Like It

by William Shakespeare

Wed 29th June - Sat 2nd July 2005

OLD TURNING YARD, CLUMBER PARK, WORKSOP

For more details please phone:  
Mrs Pat Thomas 01909 731778



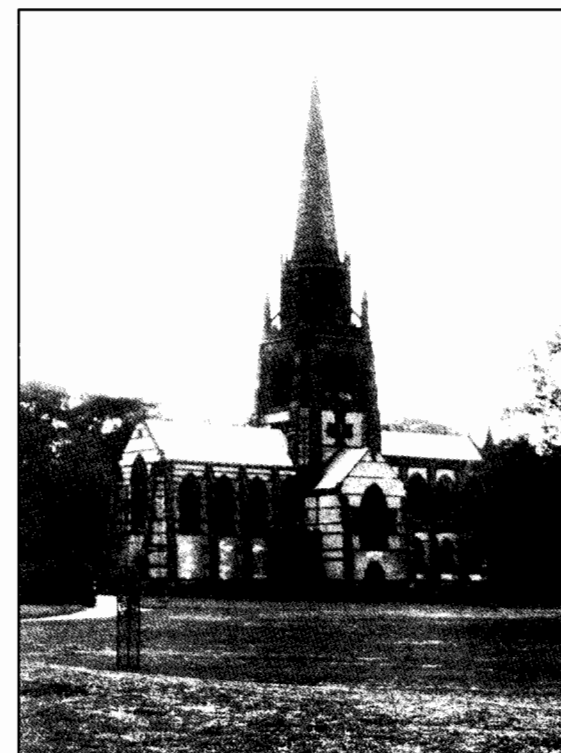
CLUMBER PLAYERS  
Open Air Classical Theatre

# 'Hamlet'

by William Shakespeare

OPEN AIR THEATRE, CLUMBER PARK, WORKSOP

Performed in conjunction with the National Trust, Clumber Park.



# WHO ARE THE CLUMBER PLAYERS?

## What Are They?

The Clumber Players are celebrating their Silver Jubilee this year, which may come as shock to some of the regulars among the audience, it certainly did to some of the members! They do say “time flies when you’re having fun”!

The group known as the Clumber players was originally conceived late in 1979 as a result of the desire of members of local dramatic societies to undertake the challenge of a Shakespearean production. For some time the idea of a joint venture had been vaguely mooted but there remained the knotty problem of a venue which could prove acceptable to all parties. And then one of those happy strokes of luck occurred.

During the summer of 1979, individuals from one of the interested groups were involved with the authorities in Clumber Park to negotiate permission for a sponsored walk and mummers play. In the course of discussions the walled gardens were offered as a suitable venue for a performance. This secluded area with potential for being isolated was not what was wanted for the mummers play but opened up wonderful scope for a Shakespeare play. It would offer not only a “neutral” venue but one with a difference, a perfect open-air setting in beautiful Clumber Park.

With some excitement, the individuals reported back to local groups. The participants at that stage were the Lindrick Players, the Portland Players, (now alas, no more) and the then

Workshop Dramatic Society (now Dukeries Theatre group). Members of all the groups met in the upstairs room of the Boundary Inn and, following an excited meeting, agreed to stage a performance of “Twelfth Night” in the Walled Gardens in July 1980.

Problems such as staging were quickly overcome thanks to the kindness of local firms in loaning pallets, and rehearsals were soon under way. The

memories of past rivalries between groups were forgotten in the excitement of the joint venture and enthusiasm and determination enabled the Players to overcome the myriad problems of staging such an event, a new experience for everyone.

The performance was very well received and the Players, fired by their success, decided that they wished to repeat the experience. However, memories of lugging pallets did not rank among their favourite: wouldn't it be better if there was a permanent stage?

Long weeks of negotiations with the authorities of the National Trust (and Clumber Park in particular) ensued. In those days the Park did not stage the welter of events, which take place now, and they were ready to welcome the group. After much discussion and stipulations about the design, materials etc., a site on the west wall of the Turning Yard was selected and the Players set to work. From the summer of 1981 onwards groups could be seen assiduously labouring, raising money and chatting up local firms for materials and in June 1982 the work was completed. It was with great pride that the Players donated the results of their labours to the National Trust.

And so to the first production on the new stage; “A Midsummer Night's Dream” in what proved to be the wettest week of the year! Oh! How it rained! But the wonderful thing was the faithful audiences - they came and enjoyed the play and helped the Players establish a tradition; despite what the elements throw, if there is an audience, be it of only one, the play goes ahead.

Since then the reputation of the Clumber Players has grown. The group has a large mailing list; you may well be on it, if not, why not ask to be added. Although mainly devoted to the works of Shakespeare, the Players from time to time branch out into productions of other classics. The actors you see on stage come from all over the area and relish the challenges of outdoor productions. However, all their efforts would be futile were it not for you, our faithful audience and so, in the words of Feste in “Twelfth Night” we'll-

*“Strive to please you everyday.”*

# Hamlet

Prince Hamlet of Denmark is confronted by the Ghost of his dead Father who tells him that his Father's death was not an accident but murder. The King had, in fact been poisoned by his brother Claudius, who had, subsequently, seized the crown and married the widowed Queen, Gertrude. The Ghost urges Hamlet to revenge his death but not to harm Gertrude.

Hamlet finds it difficult because he only has the word of the Ghost and it may be a trick of the Devil in order to damn him. In any event, the killing of a King was a treasonable event punishable by death. Hamlet tries to find more proof of his uncle's treachery by pretending to be mad in order to trick him.

Claudius' chief advisor, Polonius, has a son Laertes and a daughter Ophelia. Ophelia has been courted by Hamlet and notices his strange behaviour. When she tells her father, Polonius, he believes him to be lovesick for Ophelia. Claudius, however, is concerned about Hamlet's behaviour and asks some of Hamlet's friends to try and find out what is wrong with him.

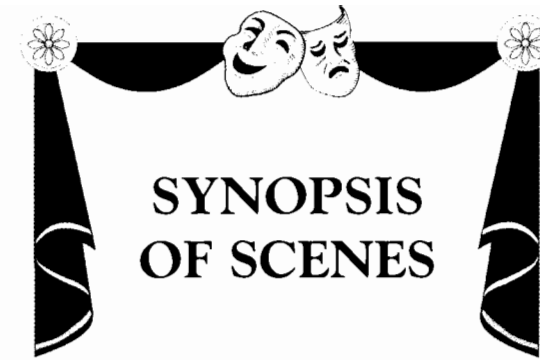
When a group of travelling actors come to play at the castle, Hamlet asks them to add another scene to their play, a re-enactment of his father's murder. If Claudius reacts to the scene, Hamlet believes it will confirm his guilt.

Claudius does indeed give himself away during the play and realises that Hamlet knows of his father's murder. The Queen summons Hamlet, having agreed that Polonius will hide behind a tapestry to listen to the conversation. During the meeting, Polonius cries out and Hamlet, believing it to be Claudius, thrusts his sword through the curtain and kills him. The King knows that Hamlet intends to kill him and arranges for him to be sent him to England.

Hearing of his father's death, Laertes returns home and is shocked by Ophelia's insanity brought about by her father's death and Hamlet's cruel behaviour towards her.

Claudius arranges a fencing match between Hamlet and Laertes. Laertes poisons the tip of his sword, while Claudius prepares a cup of poisoned wine however the Queen drinks the wine and dies. Hamlet is wounded by the poisoned sword and retaliates by using the same sword on Laertes. Laertes confesses his treachery and that of Claudius, Hamlet kills Claudius and then dies of his poisoned wound.

The play ends when Fortinbras, the Prince of Norway, arrives and, seeing the slaughter claims Denmark for himself.



PROLOGUE		The Orchard - Elsinore Castle, Denmark
ACT I	Scene 1	Court at Elsinore
	Scene 2	Battlements of Elsinore Castle
	Scene 3	Courtyard
	Scene 4	Polonius' Garden
	Scene 5	Battlements
	Scene 6	Battlements
ACT II	Scene 1	Polonius' Chambers
	Scene 2	Court at Elsinore
ACT III	Scene 1	Court at Elsinore
	Scene 2	Court at Elsinore
		~15 Minute Interval~
ACT III	Scene 3	Claudius' Chambers
	Scene 4	Gertrude's Bedchamber
ACT IV	Scene 1	Gertrude's Bedchamber
	Scene 2	Courtyard
	Scene 3	Court at Elsinore
	Scene 4	Near the Harbour
	Scene 5	Court at Elsinore
	Scene 6	Horatio's Chambers
	Scene 7	Claudius' Chambers
ACT V	Scene 1	The Graveyard
	Scene 2	Court at Elsinore

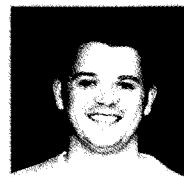
# THE CHARACTERS

Ghost .....	David Larder
King Hamlet .....	David Denwood
Claudius .....	Paul Turner-Johnson
Gertrude .....	Trudi Jackson
Hamlet .....	Chris Hind
Polonius .....	Roger Westwood
Laertes .....	Alan Selby
Ophelia .....	Rachel Mee
Reynaldo .....	James Stanley
Horatio .....	James Webb
Voltmand .....	John Pilkington
Osrick .....	James Stanley
Barnado .....	Derek Green
Franciso .....	Bob Lockett
Marcellus .....	David Ward
Gravedigger .....	Bob Lockett
Sailor .....	Richard Stanley
Priest .....	Jonathan Paulger
Fortinbras .....	Beetie Goodhew
Captain .....	Steve Belshaw
Player 1 .....	David Denwood
Player 2 .....	Alison Bettridge
Player 3 .....	Derek Green
Player 4 .....	Laura Hall
Player 5 .....	Bob Lockett
Servant 1 .....	Rachel Udall
Servant 2 .....	Debra Tuckett
Gentleman .....	Gail Belshaw

Attendants, Soldiers, Members of Court

Les Blackshaw  
 Gilly Callaby  
 Greg Chesters  
 Stephanie Le Page  
 Pat Thomas  
 Barbara Warsop  
 Bob Whorton

# THE PLAYERS



## Chris Hind ~ Hamlet

This is Chris' second appearance for the Clumber Players, although his first Shakespearian role - and what a role! Chris has made appearances for Dinnington Operatics as Kips in "Half A Sixpence" and Worksop Operatics as Bobby Child in "Crazy for you" a demanding role which required a considerable amount of dancing skills. Chris graduated in 2000 with a degree in theatre studies and dance technique. Sept 2004 will see Chris embark on his teaching career.

## Steve Belshaw ~ Captain

Initially dragged along to rehearsals by wife Gail, Steve eventually succumbed to the "Clumber Charm" and joined us on stage as Antonio in "Much Ado About Nothing", since then he's cropped up all over the place. A member of several other theatre groups, one of Steve's favourite roles was that of Daddy Warbucks in "Annie" where he got to boss wife Gail about!



## David Denwood ~ King Hamlet/ Player 1

David enjoys all Shakespeare's plays and says his parts are fun to play. He has been involved in theatre and entertainment for over 50 years in both an amateur and professional capacity including amateur operatics and musical comedies, folk singing and entertaining at medieval banquets. He has had t.v. parts in "Crimewatch" and "Hetty Wainthrop". His latest appearances have been in a training video and on stage at the Palace Theatre Mansfield in "Kiss Me Like You Mean it".

## Trudi Jackson ~ Gertrude

This is Trudi's first appearance for the Clumber Players since 1994. She first joined the Players in 1982 and her roles included Jessica in "The Merchant Of Venice"; Rosalind in "As You Like it" and Lady Macbeth. Trudi works with children with special needs and when she's not busy with work and her two children she enjoys going to the theatre.



## Paul Turner-Johnson ~ Claudius

Having enjoyed playing Mark Anthony in "Julius Caesar" last year, Paul welcomes the challenge of Claudius in his second attempt at "Shaky" with the Clumber Players. Paul is a member of Lantern Theatre Group in Sheffield and Retford Little Theatre. He says that living in Sheffield is ideal for running, cycling and rock climbing (with Laertes!) . Daughters Amy & Cleo ensure that any remaining spare time is put to good use.

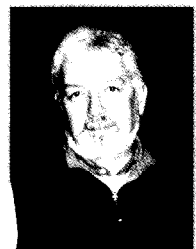


**John Pilkington ~ *Voltemand***

This is John's first appearance for the Clumber Players and he admits to finding the play quite difficult to follow initially. A member of the Dukeries Theatre Group, John has appeared in "Our Day Out" and "Confusions" where he had the unenviable task of having to serve up 4 three course meals (silver service) and to uncork a bottle of wine! When he's not at school or on stage John enjoys horse riding and playing the guitar.

**Alan Selby ~ *Laertes***

This is Alan's second outing with the Clumber Players having played numerous "bit" parts in "Julius Caesar" last year. He decided to read for the part of Laertes when he heard it required a big sword and a pair of tights - enough said! A member of Retford Little Theatre and Lantern Theatre (Sheffield), Alan has played Mick in "The Caretaker", Richard in "The Lion in Winter" and Tom in "The Glass Menagerie" and many other parts "too forgettable to remember".



**Roger Westwood ~ *Polonius***

Having returned to the Clumber stage last year as Brutus in "Julius Caesar", Roger has obviously realised what he had been missing - the wonderful atmosphere, the midges, the drizzle...that he has decided to return again this year. Roger enjoys performing Shakespeare and has made several appearances for Clumber Players including "Midsummer Night's Dream" and in Richard III for the Retford Little Theatre.

**Derek Green ~ *Barnado/ Player 3***

Derek has been acting for 5 years with Retford Little Theatre and has had parts in "Night Must Fall" and "Waiting For Godot" amongst others. This is Derek's first foray into Shakespeare. He says he has enjoyed "seeing the director's vision come to life, but not rehearsing in the rain!" Off stage Derek enjoys American Football and watching Ordsall Rangers and he hates coleslaw!



**Bob Lockett ~ *Franciso/Gradvedigger/Player 5***

This is Bob's third appearance for the Clumber Players and he says that he cannot imagine a spring without an open-air performance. "Hamlet" is Bob's "all time favourite of all the plays". Bob has also made appearances for the Dukeries Theatre Group at the Regal and says "I have made no film or TV appearances, although I watch a lot"! When he's not working with literacy in school or playing the guitar, Bob likes to write crime novels and "maintaining delicate relationships with literary agents:!"



**James Webb ~ *Horatio***

James' previous appearances for the Clumber Players include Benedick in "Much Ado About Nothing" and Chapuys in "A Man For All Seasons". However his most recent achievement has been to direct the Dukeries Theatre Group's production of Alan Ayckbourn's "Confusions" - 5 plays in one! James says it is always a real pleasure to be at Clumber "mosquitoes, light aircraft and ducks - a veritable smorgasboard of rural nirvana!"

**David Ward ~ *Marcellus***

Dave has been with the Clumber Players for nine years and is also a member of the Dukeries Theatre Group. In addition to playing various parts over the years Dave also enjoys the role of Stage Manager. He says he likes "well built stage sets" and dislikes "actors"! In his spare time Dave enjoys gardening and spending his time with his grandchildren.



**Rachel Mee ~ *Ophelia***

Rachel enjoys playing the part of Ophelia as she is "a very loving and trusting person". She says it has been challenging to portray the grief and insanity that Ophelia experiences. Previous roles Rachel has played include Abigail in "The Crucible" for Retford Little Theatre, Lucy in the "Rivals" for Doncaster Little Theatre and Catherine in "The Heiress" for Gringley 100 Players. Rachel's spare time is currently spent planning her wedding for next year!

**David Larder ~ *Ghost***

David is new to Worksop and the Clumber Players. He says his character is "crucial to the play's development" and thinks that Shakespeare himself would probably have played him. David's first ever Shakespearian role was at the age of 15 as Shylock. He trained with the Bristol Old Vic and his career has included professional and quality amateur dramatic work. His most recent t.v. appearance was as a trial judge in January 2004 in Sky One's "Dream Team".



**James Stanley ~ *Reynaldo & Osrick***

This is James' first time on the Clumber slabs! And he says he's enjoying every minute of it. He says he is very like his character Osrick who is "Eternally happy and has an inordinate ability to get out of trouble". Although he is only 17 James has played a variety of parts from Danny in Grease; Jean Valjean in Les Miserables for Valley School to Bunny in the Mask of Moriarty and a cuckolded Scoutmaster in Confusions for Dukeries Theatre Group. James has recently directed a hugely successful show for Valley School - Showstoppers.



**Alison Bettridge ~ *Player 2***

Alison is a founder member of the Clumber Players and played Viola in their first production of "Twelfth Night". Since then she has appeared in several Clumber productions including "King Lear" and "Julius Caesar". A member of Retford Little Theatre, Alison has appeared in "Dial M for Murder", "Blood Money" and "Double Double" to name but a few. When she's not learning lines or attending rehearsals, Alison enjoys "most things that are creative and fun".

**Laura Hall ~ *Player 4***

Laura made her debut for the Clumber players in 1999 as a Fairy in Midsummer Night's Dream and sadly this will probably be Laura's last appearance as she heads off to London to study Drama. In addition to her acting talents, Laura also has a wonderful singing voice and is an accomplished flautist, regularly playing for the Notts County Orchestra. We would like to wish her all the best for the future.

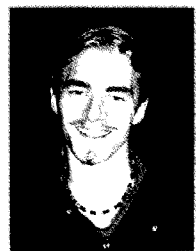


**Rachel Udall ~ *Servant 1***

Making her first appearance on stage since university, Rachel definitely prefers acting out Hamlet to studying it! She says that Shakespeare's use of the servants to reveal the rudiments of Claudius' plans is intriguing. Rachel has enjoyed the experience which has given her the opportunity to meet new people and she says it relieves the stress of her teaching career and, more importantly, Rachel hopes to return next year.

**Debra Tuckett ~ *Servant 2***

Debra says she has read Hamlet many times and has seen it performed on numerous occasions but still manages to be inspired and moved by different aspects. In this instance she is "struck by the complexities of the parent/ child relationships that Shakespeare gives us". When Debra is not busy at work she enjoys reading and is working on a novel which is set in 1942 and tells the story of Italian POW in Scotland.



**Beetic Goodhew ~ *Fortinbras***

A Performing Arts student, this is Beetic's first foray into Shakespeare. He has enjoyed the experience although he says he found the responsibility of delivering the final lines quite daunting. He has performed a variety of roles for several local theatre groups and recently received excellent reviews for his portrayal of the philandering landlord Gosforth for the Dukeries Theatre Group's production of Ayckbourn's Confusions.



**Gail Belshaw ~ *Gentleman***

A talented lady indeed, Gail's previous roles for the Clumber Players include Beatrice in "Much Ado About Nothing" and Alice More in "A Man For All Seasons". Gail is also a member of the Phoenix Theatre Company and this year is making her debut as a director for their forthcoming production of "Oliver". In her "spare" time Gail also enjoys gardening.

**Richard Stanley ~ *Sailor***

This is Richard's first appearance for the Clumber Players. He is a member of Dukeries Theatre Group having played Reilly in "Our Day Out"; a suicidal manic depressive in "Habeas Corpus" and Martin in "Confusions". He has appeared in several productions for Valley School including their recent one "Showstoppers" which was directed by Richard's brother James - This wasn't problem as Richard says "I didn't take any notice of him"!



**Jonathan Paulger ~ *Priest***

A true Clumber stalwart, it just wouldn't be the same without Jonathan! He is the mainstay of our poster campaign and can always be relied on to lend a hand wherever it is needed on stage or off. Jonathan is also a member of Retford Operatics and has recently appeared in "My Fair Lady" at the Majestic Theatre.

# Step Back In Time



*The Company*  
For  
**ORIGINAL  
COSTUME &  
PROPS**  
**IMAGINATIVE  
FANCY DRESS**

[www.stepback-costumes.co.uk](http://www.stepback-costumes.co.uk)  
Telephone 01777 870044

## **CARLTON TAVERN**

**Quiz Nights**

**Great Food**

**Great Beer**

**Great Atmosphere**

Carlton Road, Worksop  
Tel: 01909 473336

## **South Anston Fire Extinguishers**

For the sale and service  
of all types of fire  
extinguishers to b.s.

**Tel: 01909 562040**

## A Note From The Director

I am very grateful that the Clumber Players felt that they could entrust their 25<sup>th</sup> Anniversary production to me and I hope you will feel that I have honoured that trust. I chose "Hamlet" because it is a first for the Company and my favourite Shakespeare play.

Uncut, the play runs for four and a half hours and knowing the vagaries of British summertime I felt obliged to cut it down to a more reasonable length for outdoor performance. Consequently, many difficult choices had to be made. The major one, for you who know the play, is the absence of Rosencrantz and Guildenstern. They have their own play so I don't feel too guilty. In case of bad weather I have aimed to make the play as dramatic and exciting as possible. In case of good weather, it will be the same!

My intention was always to make the characters as young as possible. For instance Claudius has usually been played as an elder statesman. I felt that Hamlet's anger at his mother's behaviour for marrying her dead husband's brother might be increased if Hamlet's uncle was a younger man. I thought that such an arrangement might well be in keeping with the experiences of many people today.

Coincidentally, after rehearsals had started I read that Trevor Nunn was going to direct a "young" Hamlet at the Old Vic because it would resonate with a contemporary audience. What do they say about great minds?

My sincere and grateful thanks to everyone involved in the production and especially to Gill Wenger and the committee for their support and advice.

*Barry Nicholls*



*The Clumber Players are privileged  
to be associated with the National  
Trust in beautiful Clumber Park.*

*Clumber is just one of the superb  
properties preserved for the Nation  
by the National Trust.*

*You can help to maintain Britain's  
Treasure trove of history. Why not  
think of becoming a Trust member  
and helping to preserve our Heritage  
for future generations?*

*Details of Membership can be obtained  
from any National Trust property.*

## Pauline Pawson 1942 ~ 2004

It is with great sadness that we report the death of Pauline Pawson earlier this year.



Pauline was a founder member of the Clumber Players and worked tirelessly in the formative years of the group, employing her energy, enthusiasm, vision and wide ranging talents to great effect.

She was a gifted actress who delighted audiences with her portrayals of many roles, notably as Olivia in the very first Clumber production, "Twelfth Night" in 1980 and Titania in "A Midsummer Night's Dream" in 1982, the first production on the stage you see before you. Anyone who saw that performance on the Friday night could surely never forget the picture of Titania and Oberon, having survived the earlier downpour, singing their song of reconciliation as an extremely large and fierce looking stray dog made an uninvited appearance and nosed in a menacing manner around their ankles. However, Pauline, like the true trouper, did not allow such minor problems to affect her performance.

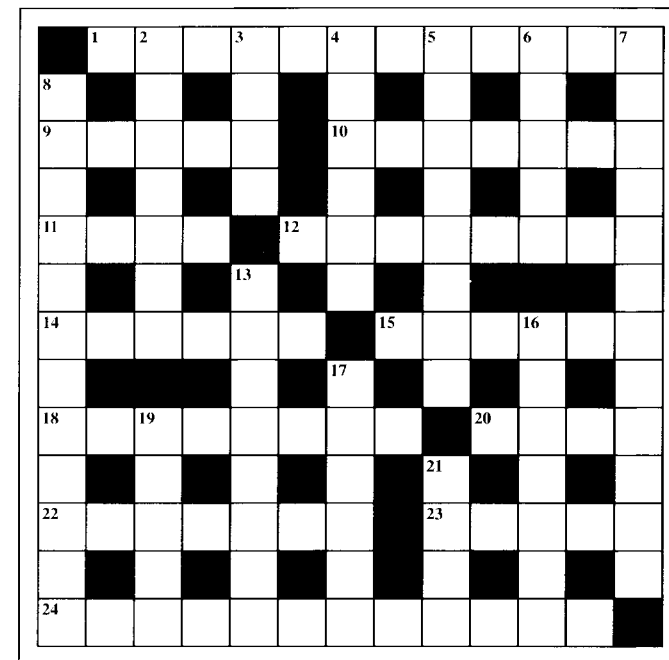
Her acting ability proved inspirational to younger members of the group and they learned much from her but she did not confine her efforts to the public side of production. During 1981 and '82 she was a regular member of the gobbo mixing and bricklaying team building the stage. With the help of husband, Ivor, she took responsibility for ensuring that the cast were suitably clothed, searching the wardrobes of hiring agencies, altering garments to fit or making them from scratch, and afterwards the equally daunting task of getting everything back to the right place.

Pauline will be remembered with great affection not just for her undoubted talents but for the person she was.

Her warmth, generosity, courage, humour and sheer love of life will be greatly missed by all who knew her. We extend our sympathies to husband, Ivor, children, Damien and Shana and young grandchildren, Jasmine, Jon and Charlie-Jayne.

## CROSSWORD

1 & 24 across and 2, 4, 7, 8, 13, 16 & 19 down have a direct or indirect link to our story.



### CLUES ACROSS

1. Older men hiss, breaking 2 down's fate. (5,3,4)
9. The gore of Mars? (5)
10. Heavenly food to act within this lady. (7)
11. A hard blow in Donegal East. (4)
12. Ere crime muddled, I thank thee. (8)
14. Hydrogen replaced by student to lighten the loaf. (6)
15. Fanatic with keenness for books. (6)
18. The Dodger certainly wasn't, according to Dickens. (8)
20. Came shortly within to engage. (4)
22. Relationship of fence to field? (2,5)
23. 'amlet shaken becomes mineral. (5)
24. 8 down a murderer? 4down does. (7,3,2)

### CLUES DOWN

2. Hail Poe? Could be our heroine. (7)
3. Cockney kings lose extremities to become noble. (4)
4. Happiness inducing smoke? Not in our story. (6)
5. According to Handel, He liveth. (8)
6. Icon I broke for style. (5)
7. 2down to Polonius perhaps. (7,5)
8. Praise, I & us to follow decoration, but the family came first. Is he our villain? (4,8)
13. The queen might get ruder. (8)
16. Swapping junction for direction could transform starlet into brother. (7)
17. Witticism said by the French is learned person. (6)
19. Dangerous place for 2 down's father. (5)
21. Leave out books surrounding note. (4)

Solutions can be found on page 18

## FOR THE PRODUCTION

Directed by.....Barry Nicholls  
 Production Manager.....Jim Wilson  
 Assisted by.....Les Blackshaw  
 Stage Management Team .....David Jones, Emma Jones,  
 Gill Wenger & Iris Presswood  
 Sound .....Tom Warsop  
 Musical Arrangements .....Jean Hanford & Rosalie Jones  
 Fencing Sequences choreographed by.....David Larder  
 Wardrobe .....Barbara Warsop  
 Assisted by.....Iris Presswood  
 Poster Design.....Guy Callaby  
 Programme.....Angela Chesters  
 Front of House .....Chris Wilson, Iris Presswood,  
 Julie Hathaway, Ellie Burgess,  
 Leah Meads, Emma Maycock

## FOR THE SOCIETY

Chairman .....Gill Wenger  
 Secretary .....Gilly Callaby  
 Treasurer .....Iris Presswood  
 Production Manager.....Jim Wilson  
 Assistant Production Manager.....Les Blackshaw  
 Ticket Liaison Officer .....Pat Thomas  
 Publicity Officer.....Angela Chesters  
 Wardrobe .....Barbara Warsop  
 Safety Officer (Honorary).....Dave Ward

### Crossword Solutions

Across: 1. LOSES HER MIND 9. ICHOR 10. MADONNA 11. GALE 12. REMERCIE  
 14. LEAVEN 15. ZEALOT 18. UNARTFUL 20. MESH 22. IS ROUND 23. METAL  
 24. SUSPECT IT'S SO.  
 Down: 2. OPHELIA 3. EARL 4. HAMLET 5. REDEEMER 6. IONIC 7. DEAREST CHILD  
 8. KING CLAUDIUS 13. GERTRUDE 16. LAERTES 17. PUNDIT 19. ARRAS 21. OMIT.

## Barry Nicholls - Director

Since joining the Clumbers Players in 2000 as the lecherous fop Sir Andrew Aguecheek, Barry has turned up every year like the proverbial "bad penny"!

Barry obviously enjoys a challenge - directing the "Clumber Rabble" is no mean feat! Not content with having to fill the cast of thousands (well, it seemed like thousands when I was typing up the cast list!) for this year's Clumber offering, Barry also took on the role of a philandering lecher in Alan Ayckbourn's "Confusions" for Dukeries Theatre Group. At one stage this meant he was holding casting sessions upstairs in the Regal's meeting room and running downstairs to rehearse his part on the Regal stage (and rarely missed a cue!).

Barry is a lecturer in real life, and as the photos show, directing appears to be very similar which is probably why he is so good at it!



The "laid back" approach



"please learn your lines"



"Now where were we?"



"Beat him hard!"