

THANK YOU

The Clumber Players would like to acknowledge the help of the following:

The Wardens and staff of Clumber Park.
 Ron Thomas.
 Julie Wakefield and the staff of Worksop Public Library.
 All who distributed and displayed Posters, Car Stickers.
 Jonathan Paulger.
 Carlton Tavern for the bar.
 Lindrick Players for wheelchair.
 South Anston Fire Extinguishers. Tel: 01909 562040
 Sale & Service of all types of fire extinguishers to B.S.
 Ray Pulman for amplification.
 St. John's Ambulance Brigade.
 A-Z Tech Security.

HONORARY PATRONS

Mr. P. D. Burton Mr. D. Emmerson Mrs. A. Barsley Mr. & Mrs. I. Pawson



Investor in People

FREE Courses

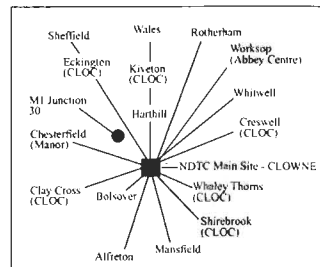
A Levels
Access
Administration/Reception Work
Art and Design
Beauty Therapy
Building and Construction
Business Studies
Catering
Computer Studies
Customer Care
Dressmaking
Electrical/Electronic Engineering
Extended Education for students with learning disabilities and difficulties
GCSEs
Hairdressing

Health and Social Care
Information Technology
Interior Design
Management Training
Motor Vehicle
Nursery Nursing
Playleader/Childminders Training
Public Services (entry to uniformed services)
Science
Science Studies (Health)
Secretarial
Soft Furnishing
Teacher Training
Travel and Tourism
Welding

FREE Transport Service*

FREE Nursery Service*

(*subject to availability)



NORTH DERBYSHIRE TERTIARY COLLEGE
 EDUCATION FOR ALL
 Rectory Road
 CLOWNE
 Chesterfield
 S43 4BQ
 Tel: 01246 810332

North Derbyshire Tertiary College is a Further Education Corporation of charitable status providing education for the community



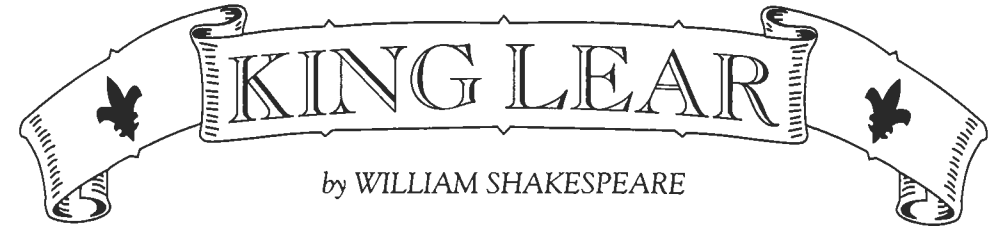
NATIONAL TRUST
 (Clumber Park)



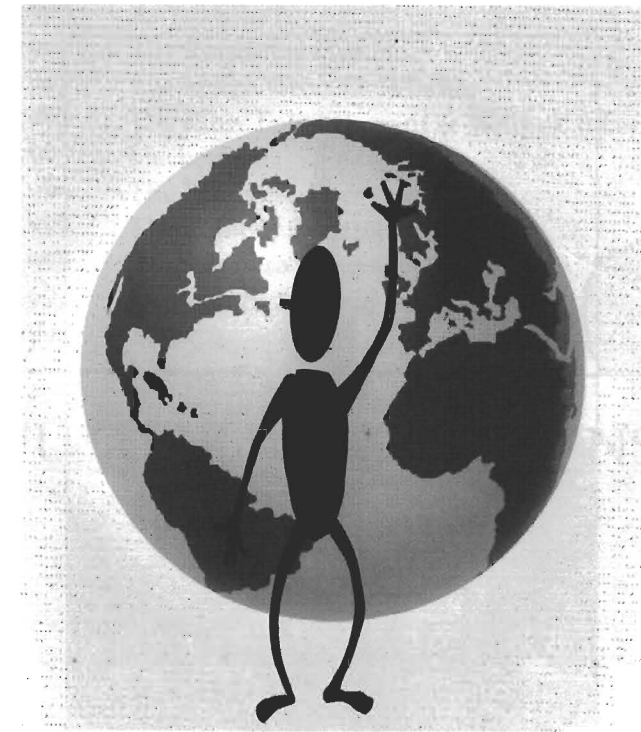
CLUMBER PLAYERS
 Open Air Classical Theatre

THE CLUMBER PLAYERS

PROUDLY PRESENT



by WILLIAM SHAKESPEARE



Wednesday July 1st ~ Saturday July 4th 1998
In the Old Turning Yard, Clumber Park, Worksop, Notts at 7.30 pm

The Clumber Players are a Registered Charity



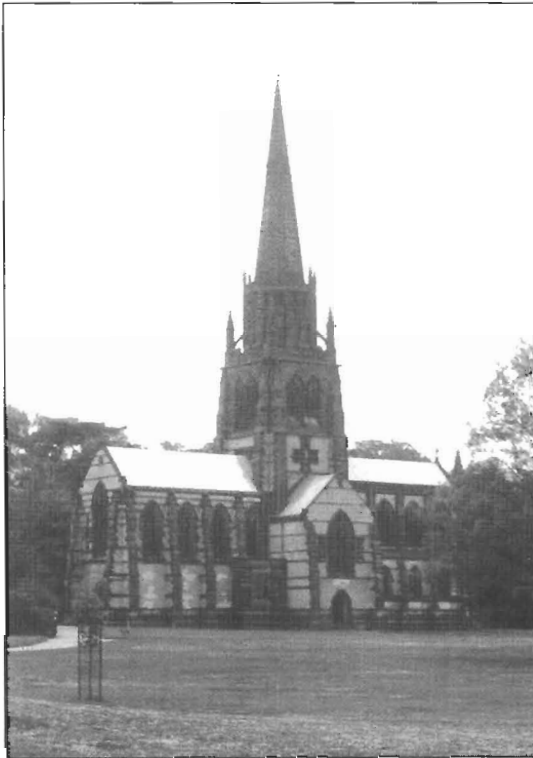
CLUMBER PLAYERS
Open Air Classical Theatre

'KING LEAR'

by WILLIAM SHAKESPEARE

OPEN AIR THEATRE, CLUMBER PARK, WORKSOP

Performed in conjunction with the National Trust, Clumber Park.



PATRONS ARE ADVISED THAT STROBE LIGHTING WILL BE USED DURING THE PERFORMANCE

CLUMBER PLAYERS PAST PRODUCTIONS

- 1980 : Twelfth Night
- 1982 : A Midsummer Nights Dream
- 1982 : Il Fornicazione (Clumber Park Spectacular)
- 1983 : Much Ado About Nothing
- 1984 : The School For Scandal
- 1985 : The Taming Of The Shrew
- 1986 : Canterbury Tales
- 1987 : A Winters Tale
- 1988 : Romeo And Juliet
- 1989 : The Merchant Of Venice
- 1990 : As You Like It
- 1991 : The Recruiting Officer
- 1992 : The Merry Wives Of Windsor
- 1992 : The Kings Entertainment at Welbeck (Masque)
- 1993 : Macbeth
- 1994 : The Rivals
- 1995 : The Comedy Of Errors
- 1996 : She Stoops to Conquer
- 1997 : Measure for Measure
- 1998 :

FUTURE PRODUCTIONS

1999 : A MIDSUMMER NIGHTS DREAM
by William Shakespeare

WED 7th July - SAT 10th July 1999

OLD TURNING YARD
CLUMBER PARK
WORKSOP

For more details please phone:
Mrs Pat Thomas 01909 731778

THE PLAY

King Lear is generally accepted as having been written towards the end of 1605. The text we have used is The New Penguin Shakespeare from which approximately 300 lines have been cut.

King Lear, in his old age, decides to abdicate and divide his kingdom between his three daughters. When Cordelia, the youngest and favourite child, refuses to make a public declaration of her love for her father she is disinherited and married to the King of France without a dowry. The Earl of Kent intervenes to defend her and is banished. The two elder daughters, Gonerill and Regan inherit the kingdom between them.

The Earl of Gloucester is deceived by his bastard son Edmund into disinheriting his legitimate son Edgar, who is forced to go into hiding to save his life.

Lear now stripped of his power, quarrels with Gonerill and Regan about his lodgings and the behaviour of his retainers. In a temper he goes into the stormy night with his Fool and Kent, who has returned disguised as a servant.

They encounter Edgar, disguised as a mad beggar. Gloucester aids Lear but is betrayed by Edmund and, captured by Cornwall and Regan, has his eyes put out.

Lear is taken secretly to Dover where Cordelia has landed with a French army. The blind Gloucester meets, but does not know, the still disguised Edgar. In battle, the Goneril and Regan's forces are victorious and both Lear and Cordelia are taken captive.



FORTHCOMING PRODUCTIONS

RETFORD LITTLE THEATRE : Joining Evening Friday 4th Sept. 98
Bar and Entertainment. Phone (01777) 702002.

LINDRICK PLAYERS : "It Runs in the Family" by Ray Cooney.
Thur-Sat 8th-10th Oct 1998
Carlton Village Hall, Long Lane, Carlton-in-Lindrick.

DUKERIES THEATRE GROUP : "An Inspector Calls" by J.B. Priestley.
Thur-Sat 19th- 21st Nov 1998. 7.30 pm.
Regal Centre, Carlton Rd, Worksop.
Phone (01909) 482896

CLUMBER PLAYERS : WHO ARE THEY?

Those blessed with memories sufficiently acute may remember a year in the last but one decade - 1979. Seated in a corner of one of Bassetlaw's more congenial hostelrys, picture two thespians:- their names or should I say name since they have a name in common is immaterial. Suffice to say that, as it is with actors each was endeavouring to get his lines in first.

"Wouldn't it be nice" said one "to be able to perform Shakespeare".

"Indeed" replied the other. "But many groups would be needed to work in harness to supply the necessary bearers of pikes, swords etc." And they continued to mumble into their foaming pints. The seed had been well and truly sown.

This is where the director must say "cut" and move on in time to July 1980, to the Walled Gardens in Clumber Park and the Clumber Players first successful production of "Twelfth Night". The groups involved at that time were: WORKSOP DRAMATIC SOCIETY, LINDRICK PLAYERS AND NEW PORTLAND PLAYERS.

The seed has born fruit. Since that time, the Players have built the permanent stage you see. The first production on this stage, "A Midsummer Night's Dream", in 1982 in what must have been the wettest week of the year set its own tradition. Like the Windmill "We never close". The Players will perform if they have an audience, be it an audience of only one, and some of the most magical memories of the actors are performances in the most inclement conditions with audiences who seem to have forgotten the weather.

We can't do without you, the faithful audience. This is the twentieth production of the Clumber Players: that fact in itself seems almost unreal when we think how we started:- a one off, Shakespearean production. We hope we have begun to become an institution. Many budding actors in the area have the opportunity to experience roles far more challenging than those provided by the average local Dramatic Society; they appreciate the demands, we hope that you, the audience, enjoy their efforts.

SYNOPSIS OF SCENES

ACT 1:	Scene 1	Lear's court
	Scene 2	The same
	Scene 3	Albany's castle
	Scene 4	The same
	Scene 5	The same
ACT 2:	Scene 1	Gloucester's castle
	Scene 2	The same
	Scene 3	The heath
	Scene 4	Gloucester's castle
ACT 3:	Scene 1	The heath
	Scene 2	Another part of the heath
	Scene 3	Gloucester's castle
	Scene 4	Outside the hovel
	Scene 5	Gloucester's castle
	Scene 6	Inside the hovel
	Scene 7	The dungeon of Gloucester's castle

– INTERVAL 15 minutes –

ACT 4:	Scene 1	The heath
	Scene 2	Albany's castle
	Scene 3	The French camp
	Scene 4	The same
	Scene 5	Gloucester's castle
	Scene 6	The road to Dover
	Scene 7	The French camp

ACT 5:	Scene 1	The British camp
	Scene 2	Near the Battlefield
	Scene 3	The British camp

CHARACTERS

LEAR, King of Britain	MIKE NIXON
GONERILL, Lear's eldest daughter	CLANCY WALKER
REGAN, Lear's second daughter	ALISON BETTERIDGE
CORDELIA, Lear's youngest daughter	NAOMI WHYBRAY
DUKE OF ALBANY, Husband of Gonerill	DAVID WARD
DUKE OF CORNWALL, Husband of Regan	ROGER WESTWOOD
KING OF FRANCE	CHRIS PULMAN
DUKE OF BURGUNDY	RAY PEARSON
EARL OF KENT, Later disguised as Caius	LAURIE HALL
EARL OF GLOUCESTER	MALCOLM JONES
EDGAR, Son of Gloucester, later disguised as Poor Tim	IAN GRANT
EDMUND, Bastard son of Gloucester	JONATHAN DIXON
OSWALD, Gonerill's Steward	FRANK STAMP
LEAR'S FOOL:	LIZ JOHNSON
CURAN, Gentleman of Gloucester's household	PETER TEMPLETON
GENTLEMAN,	RAY SHAW
SERVANTS,	MEMBERS OF THE SOCIETY
OLD MAN, A tenant of Gloucester	JONATHAN PAULGER
MESSENGER	PETER TEMPLETON
DOCTOR, An attendant on Cordelia	RAY PEARSON
CAPTAIN, Follower of Edmund	DAVID WARD
HERALD	TOM SHAW
SERVANTS, SOLDIERS, KNIGHTS	CHRIS PULMAN
	SAMANTHA SEAR
	DAVID HANCOCKS
	TRISTAN AYLING

ORIGINAL MUSIC FOR THE PRODUCTION WRITTEN AND PERFORMED BY MARK PULMAN.



ALISON BETTERIDGE - Regan

One of the Clumber Players founder members who has been away for quite a while but rejoined us last year to play Isabella in "Measure For Measure". In the spring of this year Alison completed the Trilogy of Ayckbourn's "Norman Conquests" when she played Sarah in "Living Together". Other recent credits include co-producing the Lindrick Players '98 pantomime with Ian Grant and appearing in the Dukeries Theatre Groups production of "Two and Two Make Sex".

JONATHAN DIXON - Edmund

Please welcome the first of our new bloods for this year. Jonathan has a great love of theatre and has a B.A. Degree in Drama which he has studied for at Loughborough University. His past credits include "Spring Awakening" when he played Headmaster Sunstroke and various original shows including a character who was a Serial Killer!! Enjoy the show Jonathan.



IAN GRANT - Edgar

Ian joined the Dukeries Theatre Group in Spring '97 for "Two and Two Make Sex" and we've not been able to get him off the stage since! This is his second Clumber appearance following last year when he played Claudio in "Measure For Measure". In recent months Ian has co-produced the Lindrick Players pantomime with Alison and appeared as Norman in the Dukeries Theatre Group production of "Living Together". He is also producing the D.T.G. Autumn production of "An Inspector Calls".



LAURIE HALL - Earl of Kent

Yes he's still here, we can't get rid of him, but there again who wants to! Laurie is a stalwart member of the Clumber Players who has been with us forever. Over the years Laurie has been in "Romeo and Juliet", "As you like it", "Merchant of Venice" and "Measure For Measure". Laurie is also a member of the Village Players at Everton where amongst other roles he includes "Arthur Birling" from "An Inspector Calls". Keep up the good work smiler.



LIZ JOHNSON - Fool

Fool by character, fool by.....we'd better not get into that! Say Hello to second newcomer of '98 in the form of Liz. A director and actress with Retford Little Theatre and Gringley Players for 26 years. Liz has directed numerous plays for R.L.T. including "The Cracked Pot", "Pocket Dream" and "Time of my Life". She has also appeared Naked in "Liaisons Dangereuses". By day she is a 'soon to be redundant' School Librarian and includes sewing as a hobby, but not in the nude!

MALCOLM JONES - Earl of Gloucester

Back with us for his fifth appearance Malcolm is fast becoming an established member of the Clumber Players. Past shows include "Measure For Measure", "Comedy of Errors" and "The Rivals". Malcolm is also a regular actor with Retford Little Theatre where he has played in "Our Day Out" and "The Seagull". When not on our stage or Retford he can be found with Gringley Players and Doncaster Thespians. As a profession Malcolm is an Insurance Broker and Financial Advisor.



MIKE NIXON - Lear

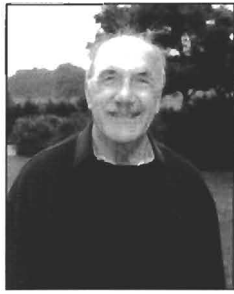
It's a pleasure to welcome Mike back for his second bite at the Clumber cherry, his last was as Ross in "Macbeth". A Probation Officer by way of employment who has a passion for Shakespeare. Mike produced "Macbeth" at Retford Little Theatre and has appeared in "Man for all Seasons" and "Man of Mode". When not on stage Mike enjoys going to the theatre, Golf and "Thinking". Have a good one Mike.



JONATHAN PAULGER - Old Man

Rapidly becoming one of Clumber's longest standing actors, Jonathan is making his fifteenth consecutive Clumber appearance, joining us way back in 1984. A process worker for Brook Bond Foods Ltd, Jonathan lists his favourite roles as William in "School For Scandal", Judge Scale in "The Recruiting Officer" and Pinch in "Measure For Measure". As a hobby Jonathan has a great love of collecting memorabilia of our Royal Family. Here's to the next fifteen years mate.



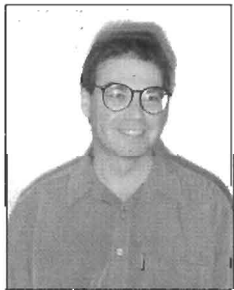


RAY PEARSON - Duke of Burgundy/Doctor

A hearty welcome to our third newcomer this year who comes with a wealth of experience. This chap gets about a bit, Retford Little Theatre, Doncaster Thespians and Retford Operatic Society. Ray finds himself mostly at home with Northern comedies and has recently enjoyed parts in "Last Tango in Whitby" and "Our Day Out". Current productions include Merlin in "Camelot" for Doncaster Thespians. By way of a hobby this young chap enjoys model railways and is an active Fund Raiser for Cancer Research.

CHRIS PULMAN - King of France

Chris has appeared in Lindrick Players pantomimes since he was 7 (he is now nearly 16!) He was one of the babes in "Babes in the Wood" and his last role was Buttons in "Cinderella". He is studying for his GCSEs at school and enjoys drama, playing the piano and clarinet and using computers. He is looking forward to "treading the boards (or flagstones) with Clumber Players after watching several productions in the audience.

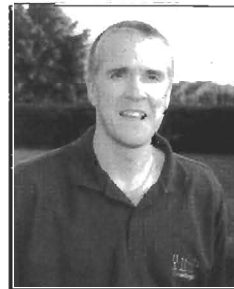


MARK PULMAN - Music Director

Mark joined the Lindrick Players in 1990 and was a member of the Village Players at Everton throughout the 1980s. He has been MD for numerous pantomimes with both of these societies and also for shows with Retford Operatic Society. "Jack and the Beanstalk" in January 1999 for Lindrick Players will be his next venture. When not working for a music publisher, Mark enjoys good food and wine, railways and walking in lakeland. Mark would be happiest at driving a steam locomotive but has to make do with tickling the ivories!

FRANK STAMP - Oswald

Frank is a founder member of the Clumber Players and has appeared in fourteen productions. He joins the cast hot foot from playing Bill Snibson in Worksop Light Operatics production of "Me and My Girl". Frank has been 'about' since 1972 when he started out in the school choir! A Metallurgist by profession he has appeared as Eric in "Bouncers", Bill in "An Evening with Gary Linacre" at Retford Little Theatre. Frank enjoys directing and has produced "Outside Edge" and "Shakers" for Dukeries Theatre Group. When not on stage you can find Frank scuba diving or gardening, but not at the same time!



PETER TEMPLETON - Messenger

Another stalwart of local theatre is our Peter. He can regularly be found with Worksop Light Operatics or occasionally the Dukeries Theatre Group. Previous Clumber appearances include Landlord in "She Stoops To Conquer" and a gentleman in "Measure For Measure". More recently Pete has taken the roles of Captain in "Dick Whittington" and as Footman/Copper in "Me and My Girl" for Worksop Light Operatics. Pete used to clean my windows but now lists himself as a rare second-hand book dealer and Antiquarian.

CLANCY WALKER - Gonerill

Please welcome to our ranks Marketing Assistant Clancy Walker. A member of the Dukeries Theatre Group where she has played Mel in their Autumn '97 production of "Shakers". Clancy is coming to the end of her year out from Leeds Metropolitan University where she is studying for her B.A. Hons in Public Relations. Other stage credits include Frenchie in "Grease" and Julies mum in the Valley Schools original production of "Harry". Clancy is also currently working towards her Duke of Edinburgh Gold Award. Good luck lass.



DAVID WARD - Duke of Albany/Captain

Now David has asked me to be kind to him this year (aren't I always?) so here goes. As well as our Honorary safety officer David is also a regular Stage Manager with the Dukeries Theatre Group. Recently David stage-managed "Living Together" and "Shakers". Work wise he has gone up in the world (I think) and has just become a PS.V. Technician. When not involved with theatre David enjoys getting under his wife's feet.

ROGER WESTWOOD - Duke of Cornwall

A Chartered Surveyor by profession Roger has been on just about every stage in the area (roughly!). He is a stalwart member of Retford Little Theatre where in recent times he has played Oberon in "Pocket Dream", Norfolk in "Man for all Seasons" and Judge Adams in "The Cracked Pot". Roger likes to make sure he does a job properly, even if it means doing it twice and to this end he has played Macbeth and Tom in "Round and Round the Garden". When you ask Roger what his pastimes are he replies "What's a pastime?"



NAOMI WHYBRAY - Cordelia

Naomi's last appearance with us was as Dimple in our 1996 production of "She Stoops to Conquer", prior to that she played Robin in "The Rivals". This young lady joins us very late in the production to take over this role, indeed as I write this Naomi is still at University! Currently studying for her B.A. in Drama and English at Hull University Naomi is no stranger to the stage and has performed with Riding Lights summer theatre school and the Dukeries Theatre Group where she played Barbara in "Happiest Days of Your Life".

A NOTE FROM THE DIRECTOR

For me, school 'in the good old days' did its best to make Shakespeare's plays dull and unimaginative: but it was speaking his words on this stage 13 years ago that turned me into the unapologetic Bard-nut I am today!

My fascination with *King Lear* started soon after that conversion, though at that time it was too big and imposing to even think of scaling. Now, it seems even bigger but at least I have some ropes and crampons - having driven my family up the wall with the thing for the last two years!

If you can stand more of this mountaineering metaphor [Not really! Ed.], I tackled the foothills when directing *The Dresser* for Village Players Everton in 1986. This play is set back-stage at a provincial theatre during the Blitz, where a larger-than-life actor/manager is, quite literally, playing the Lear of his life. The plot of *King Lear* interweaves the relationships within the touring company he leads; though at the time most of it went over my head! For this chance at the real McCoy, each member of Clumber Players gets my most grateful thanks.

Our staging is simple in order to show off the wonderful setting that we have here in the Park, and also to bring out the story, uncluttered. Although written almost four centuries ago, the themes explored in *King Lear* are as relevant today as they were then, and we have tried to make the play as accessible to a modern audience as our skills permit.

Thank you for coming tonight. We hope that the storm scene is only a stage effect, and that we see you at our future presentations.

Ray Shaw (Director)



The Clumber Players are privileged to be associated with the National Trust in beautiful Clumber Park.

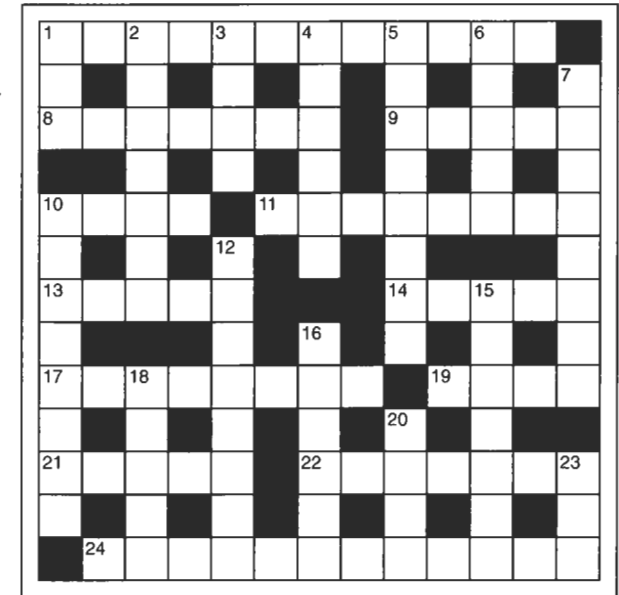
Clumber is just one of the superb properties preserved for the Nation by the National Trust.

You can help to maintain Britain's Treasure trove of history. Why not think of becoming a Trust member and helping to preserve our Heritage for future generations?

Details of Membership can be obtained from any National Trust property.

CROSSWORD

(2, 3, 10 & 14 and 4, 11 & 24 have ties of blood.)



CLUES ACROSS

1. Law Officer? Assured protection! (5, 7)
8. What Old MacDonald had. (3, 4)
9. Main importance? (5)
10. Sidecar tows among other transport. (4)
11. See 4 down.
13. Norse war leader will turn to nothing. (5)
14. Anger changes my sisterly character. (5)
17. Ou les couteaux des assassins sont terminés dans théâtre écossais. (2, 6)
19. British direction succeeded 500 for aristocrat. (4)
21. Turner laid zero apparitions; were they seen by 17? (5)
22. Devon river member backing good man releases from obligation. (7)
24. See 12 down.

CLUES DOWN

1. Roaring sign? (3)
2. No longer I alter my sisterly character. (7)
3. He's real altered, our eponymous hero! (4)
4. and 11 across. Maddened N. guard created half brothers in our tale. (6, 3, 5)
5. Raises spirits in wench e'er sad. (8)
6. Imitating primate? (5)
7. 10 down's suitor, monarch of England? - No! (2, 6)
10. Dear coil involved a tragic figure. (8)
12. and 24 across. Grain defence, alternatively destination of nursery doctor figure in our story. (8, 2, 10)
15. Chimney? Change of leading note could hold adhesive. (7)
16. Office furniture? (6)
18. Disparager taking part in taboo errand. (5)
20. Germ, we hear, to give away. (4)
23. I leave Iris to return to a knight. (3)

For solution see page 15.

FOR THE PRODUCTION

Directed by RAY SHAW
 Musical Director MARK PULMAN
 Production Manager JIM WILSON
 Stage Manager GILL WENGER
 Assistant Stage Manager LES BLACKSHAW
 Assisted by CLAIRE BAXTER, SAMANTHA SEER,
 MARGARET NIXON
 Wardrobe BARBARA WARSOP
 Assisted by GILLY CALLABY, IRIS PRESSWOOD
 Lighting/Electrics FRANK STAMP, TERRI LEE
 Poster Design RAY SHAW
 Programme FRANK STAMP
 Front of House IRIS PRESSWOOD, DAVID JONES
 EMMA BEARE, CHRIS WILSON
 PAT & RON THOMAS

MANY THANKS TO EVERYONE WHO HELPED WITH THE
 PRODUCTION

FOR THE SOCIETY

Chairman GILL WENGER
 Secretary GILLY CALLABY
 Treasurer IRIS PRESSWOOD
 Production Manager JIM WILSON
 Assisted by LES BLACKSHAW
 Ticket Liaison Officer PAT THOMAS
 Publicity Officer FRANK STAMP
 Wardrobe BARBARA WARSOP
 Safety Officer (Honorary) DAVID WARD

'IN REHEARSAL'



RAY SHAW : Director/Gentleman

Please welcome to the Director's chair Mr. Ray Shaw. Now Ray is no stranger to the Clumber Players or Shakespeare having completed an Open University Degree course in The Bard himself. An experienced actor/Director with Retford Little Theatre, Village Players at Everton and Clumber Players. In years past Ray has directed "The Dresser", "Billy Liar" and "Twelfth Night". Acting-wise Clumber credits include Leontes in "Winters Tale" and Hortensio in "Taming of the Shrew". When not involved with the theatre Ray likes bowling, music and playing the piano.



CROSSWORD SOLUTIONS
 Across: 1. LEGAL GENERAL, 8. OWN FARM, 9. CHIEF, 10. CART, 13. ROLLO, 14. REGAN,
 17. EN BANQUO, 19. DUKE, 21. IDOLA, 22. EXEMPTS.
 Down: 1. LEO, 2. GONERILL, 3. LEAR, 4 & 11 across, EDMUND AND EDGAR, 5. ENCHEERS, 6. APING,
 7. OF FRANCE, 10. CORDELIA, 12 & 24 across, CORNWALL OR GLOUCESTER, 15. GLEUPOT,
 16. BUREAU, 18. BOOER, 20. CEDE, 23. SIR.