

THANK YOU

The Clumber Players would like to acknowledge the help of the following:

The Wardens and staff of Clumber Park.

Ron Thomas.

Julie Wakefield and the staff of Worksop Public Library.

All who distributed and displayed Posters, Car Stickers.

Jonathan Paulger.

Adrian Chesters.

The Carlton Tavern for the bar.

South Anston Fire Extinguishers. Tel: 01909 562040
Sale & Service of all types of fire extinguishers to B.S.

St. John's Ambulance Brigade.

A-Z Tech Security.

HONORARY PATRONS

Mr. P. D. Burton Mr. D. Emmerson Mrs. A. Barsley Mr. & Mrs. I. Pawson



CLUMBER PLAYERS
Open Air Classical Theatre



NATIONAL TRUST
(Clumber Park)



CLUMBER PLAYERS
Open Air Classical Theatre

THE CLUMBER PLAYERS

PROUDLY PRESENT

Twelfth Night

by WILLIAM SHAKESPEARE



Wednesday July 5th ~ Saturday July 8th 2000

In the Old Turning Yard, Clumber Park, Worksop, Notts at 7.30 pm

The Clumber Players are a Registered Charity

Clumber Players Past Productions

- 1980 : Twelfth Night
1982 : A Midsummer Night's Dream
1982 : Il Fornicazione (Clumber Park Spectacular)
1983 : Much Ado About Nothing
1984 : The School For Scandal
1985 : The Taming Of The Shrew
1986 : Canterbury Tales
1987 : A Winter's Tale
1988 : Romeo And Juliet
1989 : The Merchant Of Venice
1990 : As You Like It
1991 : The Recruiting Officer
1992 : The Merry Wives Of Windsor
1992 : The King's Entertainment at Welbeck (Masque)
1993 : Macbeth
1994 : The Rivals
1995 : The Comedy Of Errors
1996 : She Stoops to Conquer
1997 : Measure for Measure
1998 : King Lear
1999 : A Midsummer Night's Dream
2000 :

Future Productions

2001 : A MAN FOR ALL SEASONS
by ROBERT BOLT

WED 4th July - SAT 7th July 2001

OLD TURNING YARD, CLUMBER PARK, WORKSOP

For more details please phone:
Mrs Pat Thomas 01909 731778

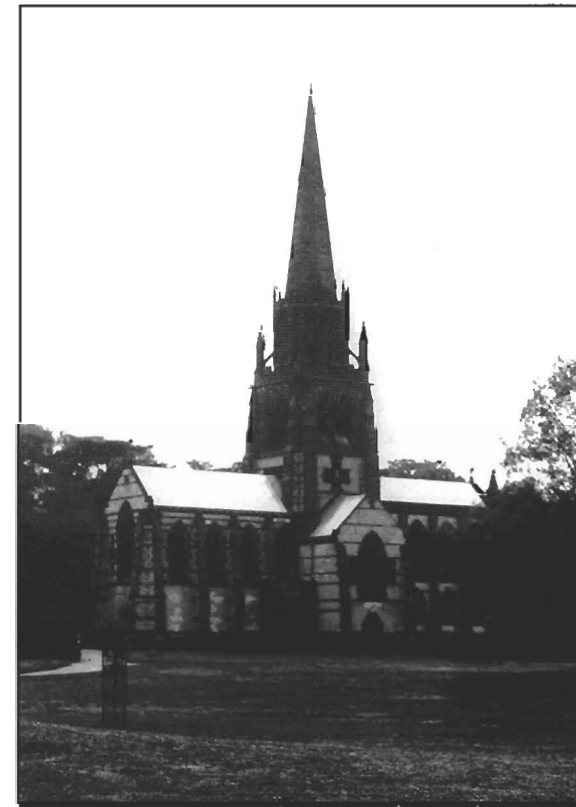


CLUMBER PLAYERS
Open Air Classical Theatre

'TWELFTH NIGHT' by WILLIAM SHAKESPEARE

OPEN AIR THEATRE, CLUMBER PARK, WORKSOP

Performed in conjunction with the National Trust, Clumber Park.



WHO ARE THE CLUMBER PLAYERS? What are They?

Many moons ago, back in the spring of 1979 to be precise, a couple of local thespians, members of different groups, could be heard idly speculating on the chances of being involved in a Shakespearean production. They came to the conclusion that, although potentially the requisite number of actors could be found if various groups joined forces, there was no suitable venue available.

In the summer of the same year, two members of the then Workop Dramatic Society were talking with officials of the National Trust in Clumber Park in connection with a different project. The subject of the Walled Garden was raised and, though it was not suitable for the event under discussion, it suggested other possibilities - a Shakespearean production.

Members of three local groups came together for a meeting to discuss the matter, Lindrick Players, Portland Players and Workop Dramatic Society (now Dukeries Theatre Group). The upshot of these discussions was the decision to stage the joint production of a Shakespeare play in the Walled Gardens, - the play selected? Twelfth Night.

A temporary stage was erected on pallets and the performances were received with enthusiasm. That should have been it, but the players, always gluttons for punishment, decided that they wished to repeat the exercise, however they were not such gluttons for punishment that they wished to lug pallets around again.

The die was cast. The players would, if they were permitted so to do, build a permanent stage and present productions annually. Lengthy discussions with Clumber Park ensued, with permission given and stipulations as to the materials to be used.

Throughout 1981 and 82 the Players laboured to raise money, dig footings, mix cement and to build the stage you see before you. In June 1982, exactly 1 week before the inaugural production upon it, the stage was completed. It was with considerable pride that the Players gave it into the ownership of the National Trust.

That first production on the new stage was 'A Midsummer's Night Dream'. With a different group of individuals it might well have turned into a 'Midsummer Nightmare' - it rained - and rained and rained! However, the weather did not succeed in damping the enthusiasm of the Clumber Players or the audiences and early in their existence the Players set a tradition. If they have an audience, be it an audience of only one, they will play, regardless of what the elements are doing.

From those early beginnings - a one off production - the scope and reputation of the Clumber Players has grown. They are very aware of and humbled by, the loyalty of the audiences, many of whom travel considerable distances to share with them year after year. Without you, the audience, the Players' work would be futile and in the words of Feste in this year's production they will:-

"Strive to please you everyday"

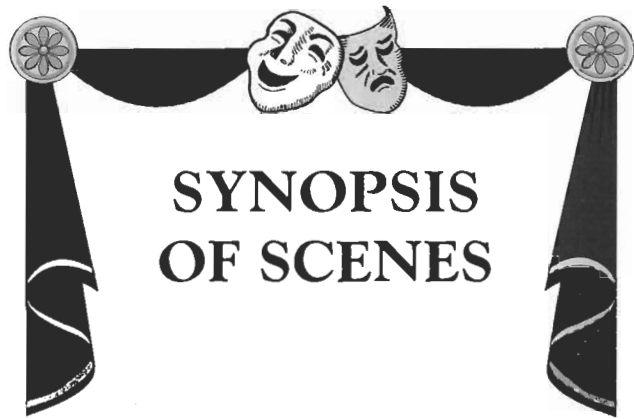
Twelfth Night

Twelfth Night was probably first performed on the 2nd of February (Candelmas Day) 1602 in middle Temple Hall, London. It is essentially light-hearted, poking fun at the serious moralists of the day.

Shakespeare is renowned for plagiarising other people's story lines and, true to form, the basic skeleton of the plot is drawn from Barnaby Rich's version of the Italian play Gl'Ingannati. However he also reuses many of his own ideas:- a girl posing as a boy (As You Like It), the loyal friend Antonio (The Merchant of Venice), the comic possibilities of eavesdropping (Much Ado About Nothing) and the confusion of twins (The Comedy of Errors) and weaves them all together in the wonderful intrigues of 'Twelfth Night'.

Viola and Sebastian, twins travelling together, are shipwrecked. Both believe the other to have perished. Viola, for her own safety, disguises herself as a boy and enters into service with the Duke Orsino. There she is employed to woo, on Orsino's behalf, Olivia, a wealthy countess. Olivia in mourning for the death of her father and brother, will have nothing to do with Orsino but falls in love with his handsome page, Viola. Olivia's household is further enlivened by the antics of her drunken Uncle, Toby Belch, and his efforts to get even with her puritanical steward Malvolio.





SYNOPSIS OF SCENES

ACT I	Scene 1	Duke's Palace
	Scene 2	Sea Coast
	Scene 3	Olivia's House
	Scene 4	Duke's Palace
	Scene 5	Olivia's House
ACT II	Scene 1	Street
	Scene 2	Sea Coast
	Scene 3	Olivia's House
	Scene 4	Duke's Palace
	Scene 5	Olivia's Garden
~Interval 15 minutes~		
ACT III	Scene 1	Olivia's Garden
	Scene 2	Olivia's House
	Scene 3	Street
	Scene 4	Olivia's Garden
ACT IV	Scene 1	Outside Olivia's House
	Scene 2	Olivia's House
	Scene 3	Olivia's Garden
ACT V	Scene 1	Outside Olivia's House

CHARACTERS

ORSINO, Duke of Illyria	Ian Grant
VALENTINE, Orsino's Attendant	David Ward
CURIO, Orsino's Attendant	Laura Hall
FIRST OFFICER	David Ward
SECOND OFFICER	Les Blackshaw
VIOLA, a shipwrecked lady, later disguised as a boy	Cordelia Maughan
SEBASTIAN, her twin brother	Neil Newell
CAPTAIN, of the wrecked ship	Les Blackshaw
ANTONIO, another sea-captain	Brian Turner
OLIVIA, a Countess	Paula Westwood
MARIA, her waiting gentlewoman	Angela Chesters
SIR TOBY BELCH, her uncle	Laurie Hall
SIR ANDREW AGUECHEEK	Barry Nicholls
MALVOLIO, Olivia's steward	Peter Burton
FABIAN, a member of her household	James Webb
FESTE, her jester	Robert Walker
THE PRIEST	Jonathan Paulger
A SERVANT	Gilly Callaby
ATTENDANTS FOR ORSINO	Lindy Devere, Gerry Callaby, Gail Belshaw
ATTENDANTS FOR OLIVIA	Gilly Callaby, Louise Pressley, Pat Thomas
MUSICIANS	Naomi Whybray, Simon Richardson, Michelle Rabbitt, Gregory Chesters



CAPTAIN/SECOND OFFICER - Les Blackshaw

A welcome return to the stage for Les, who is also involved with the Dukeries Theatre Group. A veteran of many Clumber productions, he says his favourite one is 'Merchant of Venice' in which he played Solario. When he's not working as a Resources and Information officer, Les enjoys walking, photography, computers and vintage transport.

MALVOLIO - Peter Burton

A founder member of the Clumber Players, retired teacher Peter Burton must surely spend more time on stage than he does at home - he's also a member of D.T.G., Lindrick Players and the Worksof Light Operatic Society. 'Twelfth Night' is Peter's favourite play, he likes the contrasting humour and dark undercurrents and says the play has a " wonderfully varied group of characters".



MARIA - Angela Chesters

Making her acting debut, Angela confesses to having "more than a few nerves". She says that she enjoys playing Maria because the character is so outgoing and mischievous and not at all like Angela herself (I'm sure that those who know her could tell a different story!). When she's not working as a Product Manager or chauffeuring her son around, Angela enjoys karaoke and reading.

DUKE ORSINO - Ian Grant

Ian's last appearance for the Clumber Players was in 1998 when he played Edgar in 'King Lear', prior to that he played Claudio in the 1997 production of 'Measure For Measure'. Since joining the Dukeries Theatre Group in 1997 for 'Two and Two Make Sex', Ian has also appeared in 'Living Together' and 'Sweet Revenge', to name but a few. He also likes to try his hand at directing, his successes include 'An Inspector Calls' and more recently Oscar Wilde's 'Lord Arthur Savile's Crimes'.



SIR TOBY BELCH - Laurie Hall

Like the proverbial 'bad penny', "old" (his words not mine!) Laurie has turned up again! This time in the role of a drunken lecher, which has obviously been well researched and which, according to Laurie "calls for acting of a high order". When not on stage for the Clumber Players or the Everton Village Players, Laurie enjoys reading, cooking and skiing (slowly!)

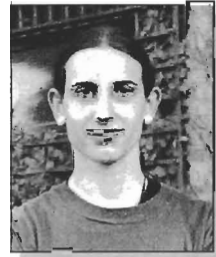


VIOLA - Cordelia Maughan

Another newcomer to the Clumber Players, Cordelia's previous roles have included Polly Brown in 'The Boyfriend' and Elsie Maynard in Gilbert & Sullivan's 'Yeoman of The Guard'. A member of the West Bridgford Operatic Society and Trent Opera, Practise Nurse Cordelia also enjoys horseriding and chocolate!

SEBASTIAN - Neil Newell

Please welcome another newcomer to the Clumber stage. Neil is a student at North Notts College, studying the Performing Arts (what else?) and only last week was appearing onstage as Dolittle in a production of 'My Fair Lady' (just a slight change of character!). When he's not studying or performing, Neil enjoys art, singing, reading and poetry.



SIR ANDREW AGUECHEEK - Barry Nicholls

Another new face for the Clumber Players, Barry, a lecturer by trade, is not one to shy away from a challenge, and as if teaching were not challenging enough, he has run 5 marathons including London and New York (and he looks such a sane chap!). Among Barry's favourite plays are Shakespeare's 'Hamlet' and Sheridan's 'The Rivals'.

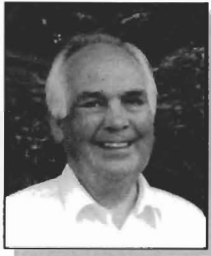
THE PRIEST - Jonathan Paulger

Making his seventeenth Clumber appearance, Jonathan lists his favourite roles as Judge Scales in 'The Recruiting Officer' and The Man in The Moon in 'A Midsummer Night's Dream'. Behind the scenes, Jonathan travels the length and breadth of the County distributing posters. This is a crucial part of our annual publicity campaign and his hard work is greatly appreciated. Jonathan also enjoys collecting memorabilia of our Royal Family.



ANTONIO - Brian Turner

Another founder member of the Clumber Players (and also the Lindrick Players), Brian's list of previous roles is endless and includes Shylock in 'Merchant of Venice', Don Juan in 'Much Ado About Nothing', Captain Brazen in 'The Recruiting Officer' to name but a few. When he is not working as a Technical Sales Manager of Refractories for Hydrocarbon Processing (Answers on a postcard please !! ?), a little bird tells me that he enjoys walking in the Dales and is not averse to a wee dram of malt (or two!!)



FESTE - Robert Walker

Not seen on the Clumber stage since our 1990 production of 'As You Like It', Robert says that his character is "a bit mysterious and rather sad". Among his favourite plays are 'The Weekend', 'Oh What A Lovely War' and 'King Lear'. Robert is a County Councillor and he lists his hobbies as Politics and growing vegetables.

VALENTINE/FIRST OFFICER - David Ward

Our David is a multi-talented chap-when he isn't working as a P.S.V. Chargehand Fitter- as well being our Honorary Safety Officer, David regularly takes to the stage with the Clumber Players and Dukeries Theatre Group, and as if that isn't enough, he is also a regular Stage Manager for D.T.G.-Oh and he likes gardening as well!



FABIAN - James Webb

A welcome return for James who joined the Clumber Players for last year's production of 'Midsummer Night's Dream'. When he's not teaching, James is also a member of D.T.G. and lists some of his favourite plays as 'Measure for Measure', the 'The Cherry Orchard' and 'Hedda Garbler'.



OLIVIA - Paula Westwood

Yet another new face for the Clumber Players, teacher Paula says she was particularly keen to play Olivia because she likes "her strength of character and the fact that she never forgets she's a woman with feminine wiles and a great deal of untapped passion". Paula's favourite Shakespeare play is 'Hamlet' and the lucky lady has seen Kenneth Branagh playing Hamlet in the Bard's hometown of Stratford! A member of the West Bridgford Operatic Society and Opera Solstice Paula doesn't have much spare time as it is all taken with rehearsals!

*Original Costume & Props
Fancy Dress Hire*

For Film, T.V. Theatre,
Photographic, Promotions
and Advertising

Contact:
Miss Charlea Cowdery
Ollerton Road, Tuxford
Notts NG22 0PQ

Tel 01777 87 00 44
Fax 01777 87 00 33
E-mail: charlea@sbit.u-net.com

Step Back in Time



**SOUTH ANSTON
FIRE EXTINGUISHERS**

*For the sale and service of
all types of fire extinguishers to B.S.*

Tel: 01909 562040

A NOTE FROM THE DIRECTOR

It was with immense pleasure that I donned the hat of Director for the Millennium production of the Clumber Players. You may well be aware that this year is a special one for the Players- our twentieth.

Way back in 1980 when the Players first came together - to a one off production of a Shakespeare play - I was given the privilege of directing it and chose my favourite of all the Bard's works, namely Twelfth Night.

For several years now I have nursed a secret longing; to be allowed to direct the same play in this Millennium year. As one does, I dropped the odd hint here and there and my ambition has been realised. The Players were kind enough to pander to my whim and lo! this year, once again, you are invited to enjoy the antics between Orsino, Olivia and the members of their respective households.

As always it has been a delight to work with this talented group and to welcome both new and familiar faces to this year's cast. You would have to travel a long way to find such a wonderful bunch of people to work with.

The Players are a team in the real sense of the word: every member, those you see on stage and the stalwarts behind the scenes, are dedicated to the common goal of staging the best production possible. My heartfelt thanks go to each and everyone of a group with whom it is a pleasure and a privilege to work.

Gill Wenger



The Clumber Players are privileged to be associated with the National Trust in beautiful Clumber Park.

Clumber is just one of the superb properties preserved for the Nation by the National Trust.

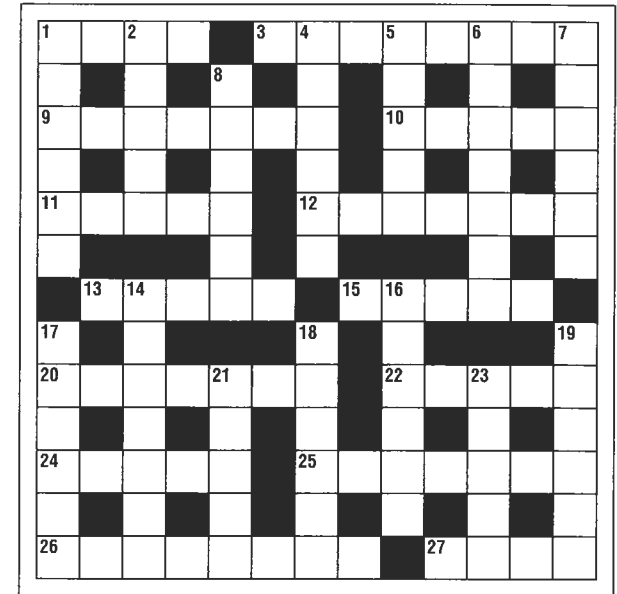
You can help to maintain Britain's Treasure trove of history. Why not think of becoming a Trust member and helping to preserve our Heritage for future generations?

Details of Membership can be obtained from any National Trust property.

CROSSWORD

Note

1, 3, 13, 15 and 27 across and 2, 5, 16, 17, 18 and 21 down all have a direct reference to our story.



CLUES ACROSS

1. and 2 down. Jug, and the effect of too much of its contents? (4, 5)
3. Ill wish of a steward. (8)
9. Reverse upset in directions becomes oval. (7)
10. Immersed in soak ends substance of ship's timbers. (5)
11. There? End at the beginning in the upper air. (5)
12. Collision of hearses? (4, 3)
13. Clown can rangle endlessly. (5)
15. Returning tune before morning in service of 17. (5)
20. Essential act to secure transport. (4, 3)
22. 500 before twenty choirs we hear. - Imagine! (5)
24. Nothing in evil to speak of. (5)
25. Diamond circle - no, much colder. (3, 4)
26. and 15 across, 21 down. Scot's patron has nerve following illness. (1, 4, 3, 5)
27. Fever. (4)

CLUES DOWN

1. Edge into rising group's topics. (6)
2. see 1 across.
4. Reparation at noon? (6)
5. Girl with strings? (5)
6. Vishnu's wife has milk curdled. (7)
7. Declaim admitting direction to be decorative. (6)
8. What 15 across had and 1 across, 2 down enjoyed. (6)
14. and 22 across. What Helena and Hermia were on June 24th. (4, 2, 1, 5)
16. and 27 across, 21 down. Scot's patron has nerve following illness. (6, 9)
17. 5 down moves with one unattainable. (6)
18. Alternatively Chinese Duke. (6)
19. Regime moved French aristocrat abroad. (6)
21. see 16 down.
23. Prolonging oriental monarch. (5)

For solution see page 15.

FOR THE PRODUCTION

Directed by Gill Wenger
 Musical Director
 Production Manager Jim Wilson
 Assisted by Frank Stamp, Les Blackshaw
 Wardrobe by Barbara Warsop
 Assisted by Gilly Callaby, Iris Presswood, Mary Turner
 Poster Design Gill Wenger
 Programme Angela Chesters
 Front of House Iris Presswood, Pat & Ron Thomas, Chris Wilson

MANY THANKS TO EVERYONE WHO HELPED
 WITH THE PRODUCTION

FOR THE SOCIETY

Chairman Gill Wenger
 Secretary Gilly Callaby
 Treasurer Iris Presswood
 Production Manager Jim Wilson
 Assisted by Les Blackshaw
 Ticket Liaison Officer Pat Thomas
 Publicity Officer Angela Chesters
 Wardrobe Barbara Warsop
 Safety Officer (Honorary) David Ward

Gill Wenger: Director

In the director's chair this year, please welcome Gill Wenger. Regulars among you will know that Gill is one of the founder members of the Clumber Players and an experienced actress and director for both Clumber and the Dukeries Theatre Group. Gill's previous Clumber successes include 'As You Like It', 'Measure for Measure' and 'A Midsummer Night's Dream'. A junior school teacher by day, when she's not marking homework, preparing lessons or planning her next theatre production, Gill can be found indulging in half a shandy (!) and a game of Tabula.



**'IN
 REHEARSAL'**



CROSSWORD SOLUTIONS
 Across: 1 and 2 down: TOBY BELCH, 3: MALVOLIO, 9: ELLIPSE, 10: OAKEN, 11: ETHER, 12: DEAD HIT, 13: FESTE, 15: MARIA, 20: LOCK CAR, 22: DREAM, 24: VOICE, 25: ICE RING, 26 and 15 across: A TASK FOR MARIA, 27: AGUE
 Down: 1: THEMES, 4: AMENDS, 5: VIOLA, 6: LAKSHMI, 7: ORNATE, 8: SPIRIT, 14 and 22 across: EACH IN A DREAM, 16: and 27 across, 21 down: ANDREW AGUECHEEK, 17: OLIVIA, 18: ORSINO, 19: EMIGRE, 23: KING.