

# THANK YOU

The Clumber Players would like to acknowledge the help of the following:

The Wardens and staff of Clumber Park

Ron Thomas

Julie Wakefield and the staff of Worksop Public Library

All who distributed and displayed Posters and Car Stickers

Jonathan Paulger

Adrian Chesters

Cattons

National Glass

The Gateford

The Carlton Tavern

South Anston Fire Extinguishers.

St John's Ambulance Brigade

A-Z Tech Security

## HONORARY PATRONS

Mr. P. D. Burton Mr. D. Emmerson Mrs. A. Barsley Mr. & Mrs. I. Pawson

### THE GATEFORD

Gateford Road  
Tel 01909 473370

Sunday Night Quiz



Friday  
Nights  
Karaoke

Sunday Lunch Carvery



### Carlton Tavern

Tel 01909 473336

Karaoke  
Nights



Great  
Beer

Great Food



QUIZ NIGHTS

### SOUTH ANSTON FIRE EXTINGUISHERS

FOR THE SALE & SERVICE OF FIRE  
EXTINGUISHERS TO B.S.

CONTACT 01909 562040



NATIONAL TRUST  
(Clumber Park)



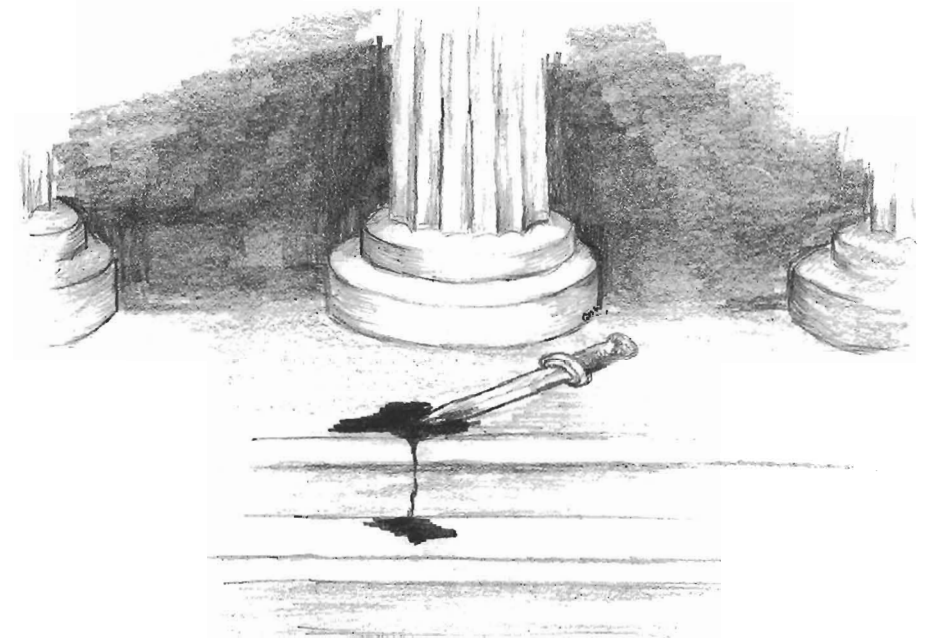
CLUMBER PLAYERS  
Open Air Classical Theatre

## THE CLUMBER PLAYERS

PROUDLY PRESENT

# JULIUS CAESAR

by WILLIAM SHAKESPEARE



Wednesday July 2nd ~ Saturday July 5th 2003

In the Old Turning Yard, Clumber Park, Worksop, Notts at 7.30 pm

The Clumber Players are a Registered Charity

## Clumber Players Past Productions

1980 : Twelfth Night  
1982 : A Midsummer Night's Dream  
1982 : Il Fornicazione (Clumber Park Spectacular)  
1983 : Much Ado About Nothing  
1984 : The School For Scandal  
1985 : The Taming Of The Shrew  
1986 : Canterbury Tales  
1987 : A Winter's Tale  
1988 : Romeo And Juliet  
1989 : The Merchant Of Venice  
1990 : As You Like It  
1991 : The Recruiting Officer  
1992 : The Merry Wives Of Windsor  
1992 : The King's Entertainment at Welbeck (Masque)  
1993 : Macbeth  
1994 : The Rivals  
1995 : The Comedy Of Errors  
1996 : She Stoops to Conquer  
1997 : Measure for Measure  
1998 : King Lear  
1999 : A Midsummer Night's Dream  
2000 : Twelfth Night  
2001 : A Man For All Seasons  
2002 : Much Ado About Nothing  
2003 : Julius Caesar  
2004 : Hamlet.

## Future Productions

**2004 : Hamlet**

by William Shakespeare

Wed 30th June - Sat 3rd July 2002

OLD TURNING YARD, CLUMBER PARK, WORKSOP

For more details please phone:  
Mrs Pat Thomas 01909 731778



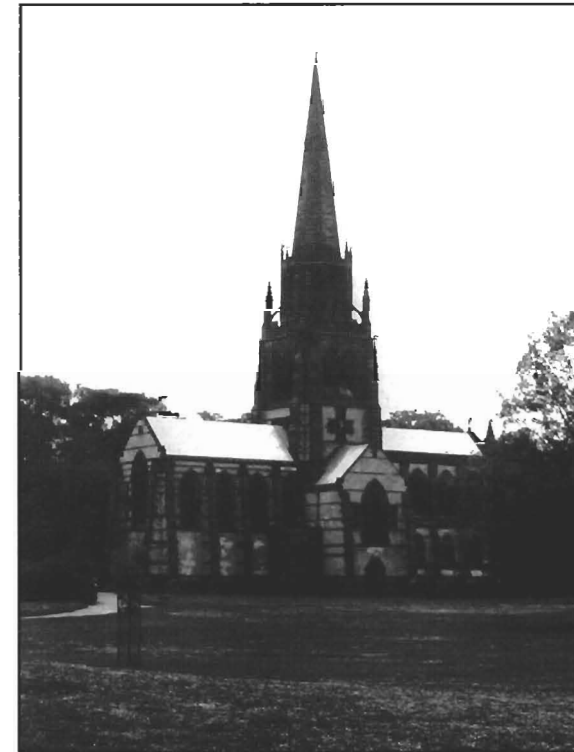
CLUMBER PLAYERS  
Open Air Classical Theatre

# 'Julius Caesar'

by William Shakespeare

OPEN AIR THEATRE, CLUMBER PARK, WORKSOP

Performed in conjunction with the National Trust, Clumber Park.



# Who Are the Clumber Players?

## What Are They?

The group known as the Clumber players was originally conceived late in 1979 as a result of the desire of members of local dramatic societies to undertake the challenge of a Shakespearean production. For some time the idea of a joint venture had been vaguely mooted but there remained the knotty problem of a venue which could prove acceptable to all parties. And then one of those happy strokes of luck occurred.

During the summer of 1979, individuals from one of the interested groups were involved with the authorities in Clumber Park to negotiate permission for a sponsored walk and mummers play. In the course of discussions the walled gardens were offered as a suitable venue for a performance. This secluded area with potential for being isolated was not what was wanted for the mummers play but opened up wonderful scope for a Shakespeare play. It would offer not only a "neutral" venue but one with a difference, a perfect open-air setting in beautiful Clumber Park.

With some excitement, the individuals reported back to local groups. The participants at that stage were the Lindrick Players, the Portland Players, (now alas, no more) and the then Worksop Dramatic Society (now Dukeries Theatre group). Members of all the groups met in the upstairs room of the Boundary Inn and, following an excited meeting, agreed to stage a performance of "Twelfth Night" in the Walled Gardens in July 1980.

Problems such as staging were quickly overcome thanks to the kindness of local firms in loaning pallets, and rehearsals were soon under way. The memories of past rivalries between groups were forgotten in the excitement of the joint venture and enthusiasm and determination enabled the Players to overcome the myriad problems of staging such an event, a new experience for everyone.

The performance was very well received and the Players, fired by their success, decided that they wished to repeat the experience. However, memories of lugging pallets did not rank among their favourites: wouldn't it be better if there was a permanent stage?

Long weeks of negotiations with the authorities of the National Trust (and Clumber Park in particular) ensued. In those days the Park did not stage the welter of events, which take place now, and they were ready to welcome the group. After much discussion and stipulations about the design, materials etc. a site on the west wall of the Turning Yard was selected and the Players set to work. From the summer of 1981 onwards groups could be seen assiduously labouring, raising money and chatting up local firms for materials and in June 1982 the work was completed. It was with great pride that the Players donated the results of their labours to the National Trust.

And so to the first production on the new stage; "A Midsummer Night's Dream" in what proved to be the wettest week of the year! Oh! How it rained! But the wonderful thing was the faithful audiences - they came and enjoyed the play and helped the Players establish a tradition; despite what the elements throw, if there is an audience, be it of only one, the play goes ahead.

Since then the reputation of the Clumber Players has grown. The group has a large mailing list; you may well be on it, if not, why not ask to be added. Although mainly devoted to the works of Shakespeare, the Players from time to time branch out into productions of other classics. The actors you see on stage come from all over the area and relish the challenges of outdoor productions. However, all their efforts would be futile were it not for you, our faithful audience and so, in the words of Feste in "Twelfth Night" we will-

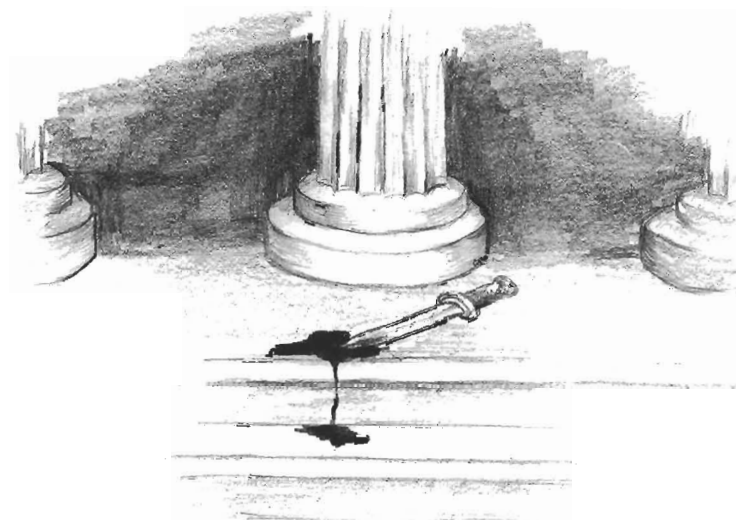
*"Strive to please you everyday."*

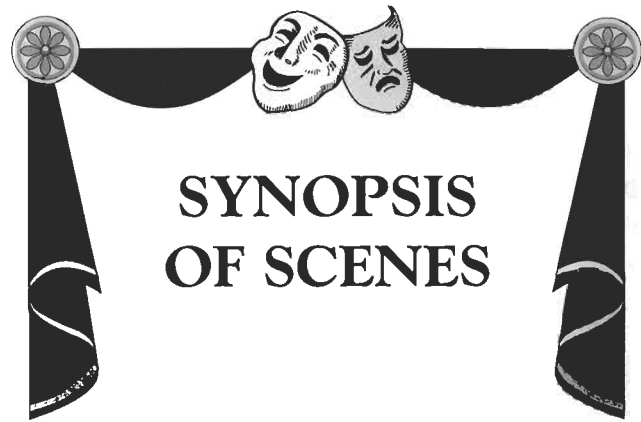
# JULIUS CAESAR

*Shakespeare's Roman tragedy, Julius Caesar, was probably produced in 1599 and printed in the 1623 folio. As usual, the Bard stole his plot; in this case from North's translation of Plutarch's "Lives". The play deals with the events of 44 B.C. when Caesar's military successes in Spain have led to increased power and popularity. This proves somewhat upsetting to the ruling classes of Rome who see much of the power they have enjoyed being leached away. Their fear and distrust of Caesar's ambition grows.*

*This distrust gives rise to a conspiracy among Roman lovers of freedom; notably Cassius and Casca. Brutus, fearful of Caesar's increasing power and unsure what it may lead to, is persuaded to join the conspirators in their plot. He does not relish what he is doing but feels it is necessary for the greater good.*

*And so - as too often happens - the cocktail of fear, mistrust and ambition paves the way for tragedy.*





## SYNOPSIS OF SCENES

### Act I

Scene 1	A Street
Scene 2	A Public Place
Scene 3	Night - A Street
Scene 4	Brutus' Orchard
Scene 5	Caesar's House
Scene 6	A Street Near the Capitol
Scene 7	The Capitol
Scene 7	The Forum
Scene 9	A Street

### Act II

Scene 1	A House Near Rome
Scene 2	A Camp Near Sardis
Scene 3	The Plains of Philippi
Scene 4	Another Part of the Field

## CHARACTERS

Julius Caesa	Peter Burton
Calphurnia (his wife)	Alison Betteridge
Portia (Marcus Brutus' Wife)	Gail Belshaw
Popilius (Senator)	Steve Belshaw
Cinna (a poet)	Steve Belshaw
Pindarus (servant of Cassius)	Bob Lockitt
Lucius (servant of Brutus)	Liam Key & Luke Nicholson
Strato (servant of Brutus)	Alan Selby
Soothsayer	Margaret Nixon
Servant to Caesar	Rhys Bethell
Servant of Antony	Bob Lockitt
Cobbler	Mike Nixon
Messenger	Alan Selby

### CONSPIRATORS AGAINST CAESAR

Marcus Brutus	Roger Westwood
Caius Cassius	Barry Nicholls
Casca	Bob Whorton
Trebonius	Mike Nixon
Decius Brutus	Alan Selby
Metellus Cimber	Malcolm Jones
Cinna	James Webb

### TRIUMVIRS AFTER CAESAR'S DEATH

Octavius Caesar	Rhys Bethell
Mark Antony	Paul Turner-Johnson
Lepidus	Jonathan Paulger

### TRIBUNES OF THE PEOPLE

Flavius	Bob Lockitt
Marullus	Jonathan Paulger
Lucilius	Mike Nixon
Messala	Bob Whorton
Volumnius	James Webb
Titinius	Malcolm Jones

Senators, Soldiers, Plebians, Policemen & Attendants .....Cast Members



### Julius Caesar ~ Peter Burton

Peter was last seen on the Clumber stage "cross-gartered in yellow stockings" as Malvolio in "Twelfth Night" in July 2002. Since then he has appeared in "The Crucible" for Retford Little Theatre, as Henry Higgins in "My Fair Lady" for Worksop Operatics Society and Max In "Sound Of Music" for The Lindrick Players to name but a few. And if that's not enough Pete also enjoys walking, golf and singing in the church choir at Carlton-In-Lindrick.

### Calphurnia ~ Alison Betteridge

The last time Alison appeared on the Clumber stage was in "King Lear" in 1998. Since then she has made appearances with Dukeries Theatre Group and more recently the Retford Little Theatre in "Double Double", "Blood Money" and "Dial M For Murder". Alison says the best bit about her role is that she "can wrap her husband round her little finger". When not out and about working and acting, Alison also enjoys reading, gardening and "being lazy" (I prefer the term R & R).



### Portia ~ Gail Belshaw

A regular with the Clumber Players since 2000, Gail also appears regularly for the Phoenix Theatre Company in Doncaster, her last role being Ado Annie in "Oklahoma" in October 2002.

Gail's favourite role was as the Wicked Witch in "The Wizard of Oz" because she got to be nasty to everyone. Husband Steve says it was because of the black leather costume, fishnet tights and knee-high boots!!

### Popilius & Cinna ~ Steve Belshaw

Steve makes his second appearance for the Clumber Players, the first was as Antonio in last production of "Much Ado About Nothing". Also a member of the Phoenix Company, Steve was also involved in Oklahoma and says one of his favourites roles was as Daddy Warbucks in "Annie" because his wife Gail played his secretary and he got to boss her about a lot!



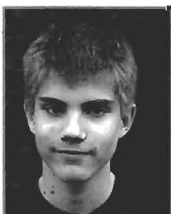
### Pindarus & Flavius ~ Bob Lockett

Bob enjoyed performing in Clumber so much last year he's come back for more (a glutton for punishment!!). His last stage performance involved a rather fetching red wig and much growling as Red Herring in Dukeries Theatre Group's production of the "Mask of Moriarty".

An accomplished crime novelist and vegetarian chef, Bob also enjoys playing the guitar in his spare time.

### Lucius ~ Liam Key

A welcome return to Liam who was last seen on the Clumber stage in "Midsummer Nights Dream" in 1999 and more recently on the Regal stage in "Our Day Out" for the Dukeries Theatre Group. A student at Dinnington Comprehensive, Liam says he hates homework, exams and reading Shakespeare (!!!), although he does enjoy performing Shakespeare. He also enjoys computers and reading, especially H.G.Wells.



### Lucius ~ Luke Nicholson

A student at Portland School, Luke is another who has been bitten by the acting bug. He made his first appearance for the Clumber Players last year in "Much Ado About Nothing" and has since appeared as Doodles in Portland's production of Bugsy and in the Dukeries Theatre Group's production of "Our Day Out". As well as acting Luke also enjoys skateboarding and playing the drums and violin.

### Strato & Decius ~ Alan Selby

A warm welcome to the first of the newcomers to the Clumber stage. Alan says he enjoys the parts because although he pops up stage at regular intervals he "only has 14 lines to learn"!

Alan has appeared on stage with the Retford Little Theatre in the "Rainmaker", "Glass Menagerie" and "Lion in Winter" to name a few. He lists his hobbies as rock climbing (often with Paul Turner-Johnson which is a bit worrying seeing their antics off stage!!), Alan also enjoys going to the pub and guzzling curries.



### Soothsayer ~ Margaret Nixon

Margaret enjoys all Shakespeare plays and her previous roles include Portia in Merchant of Venice, Lady Macbeth.

Not surprisingly Margaret lists one her hobbies as Shakespeare in text and performance. Worryingly she also lists Pogo-stick racing and beekeeping - I think she's pulling my leg there!

### Octavius & Servant to Caesar ~ Rhys Bethell

Please welcome another newcomer to the Clumber stage, Rhys enjoys Shakespeare, particularly the experience of playing these two characters. A member of the Retford Little Theatre Rhys has played King Phillip of France in "The Lion in Winter" and Edmund in "The Lion, The Witch and The Wardrobe". His other hobbies include playing the guitar and piano.



### Trebonius & Lucilius ~ Mike Nixon

A warm welcome to the Clumber stage, Mike says he likes his characters because "they are not too wordy for Shakespeare".

In his spare time Mike enjoys photography.

### Brutus ~ Roger Westwood

Roger "went missing" after playing Theseus (Midsummer Night's Dream in 1999). His last Shakespearean role was Buckingham in Retford Little Theatre's Richard III. He says he's back for a bit of fresh air but remains perplexed as to why Brutus chose to deliver his most vital public speech in prose, "the whole play could have been so different. Nowadays they'd have probably given him a 'fat cat' pension for all his errors of judgement"!





**Caius Cassius ~ Barry Nicholls**

Since his first appearance at Clumber as Sir Andrew Aguecheek in Twelfth night (wearing a blonde wig!) Barry has appeared in all Clumber productions. He has also made two appearances for the Dukeries Theatre Group. The last as Dr Watson in "The Mask of Moriarty" (wearing a rather splendid ballgown!).

When asked what he liked about his character Barry replied "there's nothing to like about Cassius, he is cunning, envious and malevolent".

**Casca & Messala ~ Bob Whorton**

Another of our newcomers, Bob says of his character "imagine sucking on a lemon, a very sour character.

A member of the Retford Little Theatre, Bob's favourite roles include Lucky in "Waiting For Godot" and Reverend Hale in "The Crucible".

When he's not acting, any spare time is spent being walked (or 'dragged' in Bob's words) by his three dogs.



**Metallus & Titinius ~ Malcolm Jones**

Having made his comeback for the Clumber Players last year as the manipulative Borachio, Malcolm just can't keep away! He has appeared on stage for several groups in a variety of productions. Among his favourites are as Professor Higgins in "My Fair Lady" and Inspector Goole in "An Inspector Calls".

Malcolm also spends time as member of the Doncaster Rotary Club.



**Cinna & Volumnius ~ James Webb**

James has just about recovered from directing "Mask of Moriarty" for the Dukeries Theatre Group, a task which was made all the more challenging when he had to step into the roles of Police Constable and Inn Keeper three weeks before the play opened (and he had to be dropped through a trapdoor!).

A primary school teacher by trade and a bit of a computer whiz (well, compared to me he is!!), James also enjoys (!!!) a spot of DIY.



**Mark Antony ~ Paul Turner-Johnson**

Paul is enjoying the challenge of his second ever Shakespeare role (made more challenging he says because he failed English at school!). His previous stage roles include leads in "Billy Liar", "Deep Blue Sea" and "Rainmaker" (to list but a few).

When he's not acting or spending time with his two daughters, Paul also enjoys Rock climbing, playing golf and running marathons.



**Lepidus & Marullus ~ Jonathan Paulger**

A veteran of the Clumber Stage, Jonathan is making his 21st consecutive appearance for the Clumber Players. Two roles which stand out for Jonathan are Judge Scale in "Recruiting Officer" and the Torch Bearer in Winter's Tale because "the atmosphere created by the torchlight was magnificent"

Jonathan also enjoys travelling and listening to music, particularly Rogers and Hammerstein - his favourite being Carousel.

*J & C*  
**I L E T T & C L A R K**  
**S O L I C I T O R S**

86 Bridge Street, Worksop,  
Nottinghamshire S80 1JF  
Telephone: (01909) 500544

*Supporting  
local theatre*

# A NOTE FROM THE DIRECTOR

Although I have been either directing or acting for the last 40 + years, it is only recently that I have had the opportunity and pleasure of both performing and directing in a Shakespeare play.

The problems associated with performing in the open air during an English summer are inherently challenging. If the rain doesn't get you the midges will! The simplicity of the Clumber Park venue determines that a great reliance is placed on the skills of the actors to capture and hold their audience's attention. With a basic set, lighting and sound, the words and sense of the play are all important.

Another aspect of presenting a play in Clumber Park that many of the audience may not be aware of, is the basic accommodation allocated to the players. A tent in the wood is all that is available, shared by all and sundry. This enforces the stoical nature of the participants and ensures companionable intimacy.

My directional debut with Clumber Players - Julius Caesar - was chosen because of its relevance to modern history. Probably most people would think this an absurd statement, but the parallels of Julius Caesar with modern day international big business and politics is so obvious that Shakespeare's play, written over 400 years ago is still relevant. The actions of modern day politicians are so often mirrored in doing the wrong things for the right reasons that perhaps a greater study of history might not come amiss.

I would like to take this opportunity to say a special "thankyou" to Mike and Margaret Nixon, and to Gill Wenger and the Committee for their support and advice.

*Rosalie Jones*



*The Clumber Players are privileged to be associated with the National Trust in beautiful Clumber Park.*

*Clumber is just one of the superb properties preserved for the Nation by the National Trust.*

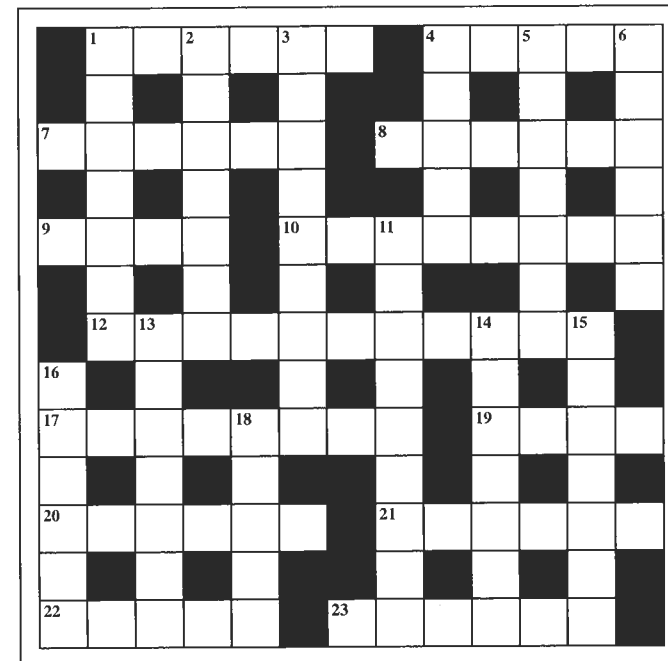
*You can help to maintain Britain's Treasure trove of history. Why not think of becoming a Trust member and helping to preserve our Heritage for future generations?*

*Details of Membership can be obtained from any National Trust property.*

# CROSSWORD

## Notes

1, 4, 9, 10, 12, 21 & 23 across and 1, 4 & 16 down allude directly or indirectly to our play.



## CLUES ACROSS

1. A race's muddled by our victim. (6)
4. Foreign house contains number of killer. (5)
7. Appearance hidden by a spectre. (6)
8. Hangers-on, internally show ill tempers. (6)
9. What's proved against the conspirators, we hear, is covered in gold. (4)
10. Member of the rowing crew? No! (8)
12. Holy man becomes confused with rough bath. Was this what 16 down did to 1 across? (4,7)
17. Rain will transform ewes to come again! (4,4)
19. Were the populace offered these with circuses? (4)
20. Second rate replaces six in trivial but clannish state. (6)
21. Main road travelling back from harbour for wife of 16 down. (6)
22. Alluring danger signal. (5)
23. Six footer only losing fifty for articulate friend. (6)

## CLUES DOWN

1. Boxer, clay originally, not in our story. (7)
2. Appointed artist to manipulative complex Greek. (7)
3. Cast? The Forum's the location where it does it! (4,3,2)
4. Malefactor, we hear. (5)
5. Observe vase so it appears. (7)
6. Aid, was sister included? (6)
11. Nope! Worth changing to allow entrance. (5,4)
13. For a change, I rest at something more palatable. (7)
14. A latter assassinated Italian ruler. (7)
15. Novice will pip Hay in scramble gladly. (7)
16. Curtailed beast, (American) in plot. (6)
18. A win once more? (5)

For solution see page 14.

# FOR THE PRODUCTION

Directed By.....Rosalie Jones  
 Deputy Director .....Mike Nixon  
 Production Manager .....Jim Wilson  
 Assisted by.....Les Blackshaw, Tom Warsop  
 Stage Manager .....Emma Jones  
 Wardrobe .....Barbara Warsop  
 Assisted by.....Iris Presswood, Ros Jones & Gill Wenger  
 Effects.....Tom Warsop  
 Properties .....Gill Wenger  
 Prompt .....Raquel MacFarlane  
 Poster Design .....Gill Wenger  
 Programme.....Angela Chesters & Roger Westwood  
 Assisted by.....Greg Chesters  
 Front of House .....Iris Presswood, Pat & Ron Thomas  
 Gilly Callaby,Chris Wilson, Leah Meads & Ellie Burgess

# FOR THE SOCIETY

Chairman.....Gill Wenger  
 Secretary.....Gilly Callaby  
 Treasurer.....Iris Presswood  
 Production Manager .....Jim Wilson  
 Assisted by.....Les Blackshaw  
 Ticket Liaison Office .....Pat Thomas  
 Publicity Officer .....Angela Chesters  
 Wardrobe .....Barbara Warsop  
 Safety Officer (Honorary) .....Dave Ward

## Rosalie Jones - Director

Making her directing debut for the Clumber Players, please welcome Rosalie Jones.

A member of various theatre groups, Ros' favourite plays include "Dangerous Liaisons" and "A Man For All Seasons". An accomplished seamstress, Ros also enjoys painting, reading (especially Dick Francis novels) and cooking and somehow still finds the time to commute to Oxford and Nottingham on a regular basis to see her granddaughters. (Could this be the real Superwoman?)

## IN REHEARSAL



CROSSWORD SOLUTION  
 ACROSS: 1. CAESAR 4. CASCA 7. ASPECT 8. ANGRERS 9. GILT 10. OCTAVIUS 12. STAR  
 THROUGH 17. RISE ANEW 19. BAPS 20. TRIBAL 21. PORTIA 22. SIREN 23. ANTONY  
 DOWN: 1. CASSIUS 2. ELECTRA 3. ACTS OUT IN 4. CINNA 5. SEEMING 6. ASSIST  
 11. THROW OPEN 13. TASTIER 14. UMBERTO 15. HAPPILY 16. BRUTUS 18. AGAIN

**CATTONS**  
**INDEPENDENT FUNERAL SERVICES**  
 4A Hardy Street, Worksop  
 01909 530880  
 24hr service